

23334

ILS or LOC RWY 22

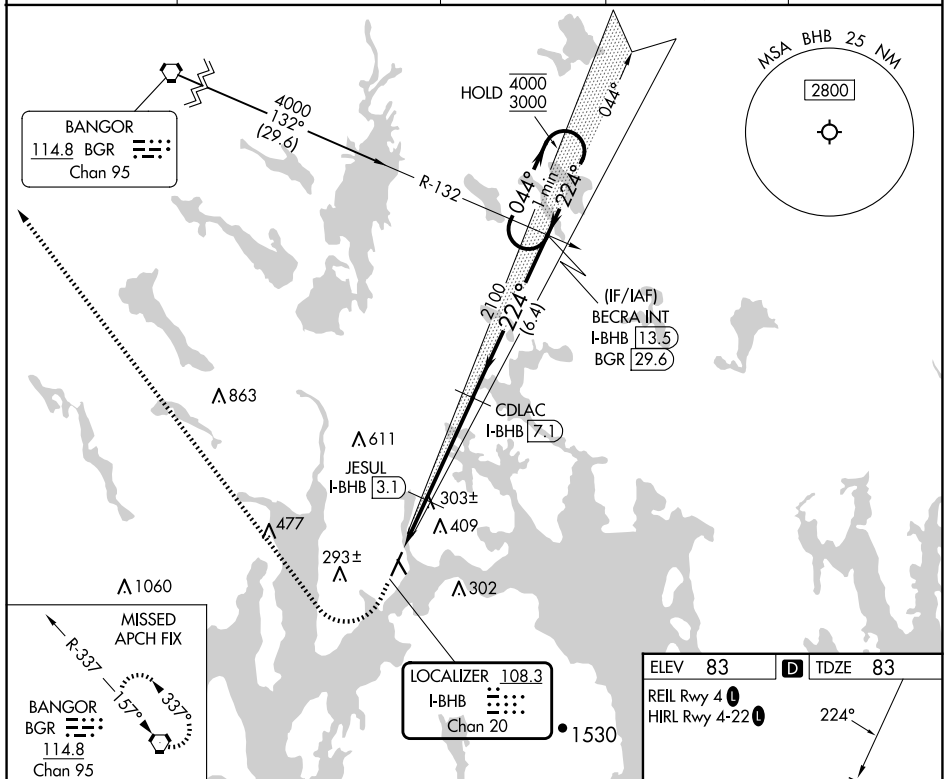
HANCOCK COUNTY/BAR HARBOR (BHB)

⚠ Circling Rwy 17, 35 NA at night.
⚠ For inop ALS, increase S-LOC Cat C visibility to 1 3/8 SM.
Autopilot coupled approach NA below 900 feet MSL.

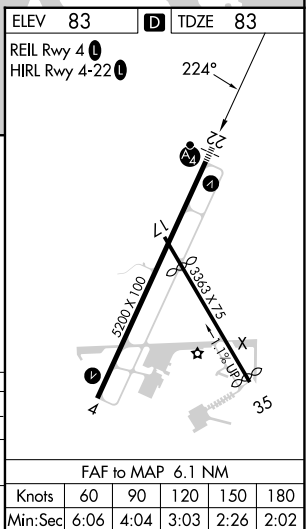


MISSED APPROACH: Climb to 2000 then climbing right turn to 4000 direct BGR VORTAC and hold.

AWOS-3PT 118.35	BANGOR APP CON 133.6 284.65	CLNC DEL 119.9	UNICOM 123.0 (CTAF)	122.7 0
---------------------------	---------------------------------------	--------------------------	-------------------------------	----------------



CATEGORY	A	B	C	D
S-ILS 22	283- $\frac{3}{4}$ 200 (200- $\frac{3}{4}$)			
S-LOC 22	580- $\frac{3}{4}$ 497 (500- $\frac{3}{4}$)		580-1 $\frac{1}{4}$ 497 (500-1 $\frac{1}{4}$)	580-1 $\frac{1}{2}$ 497 (500-1 $\frac{1}{2}$)
CIRCLING	600-1 517 (600-1)	720-1 637 (700-1)	720-1 $\frac{3}{4}$ 637 (700-1 $\frac{3}{4}$)	840-2 $\frac{1}{2}$ 757 (800-2 $\frac{1}{2}$)



HANCOCK COUNTY/BAR HARBOR (BHB)
ILS or LOC RWY 22

NE-1, 07 AUG 2025 to 04 SEP 2025