

WAAS
CH **53617**
W14A

APP CRS
139°

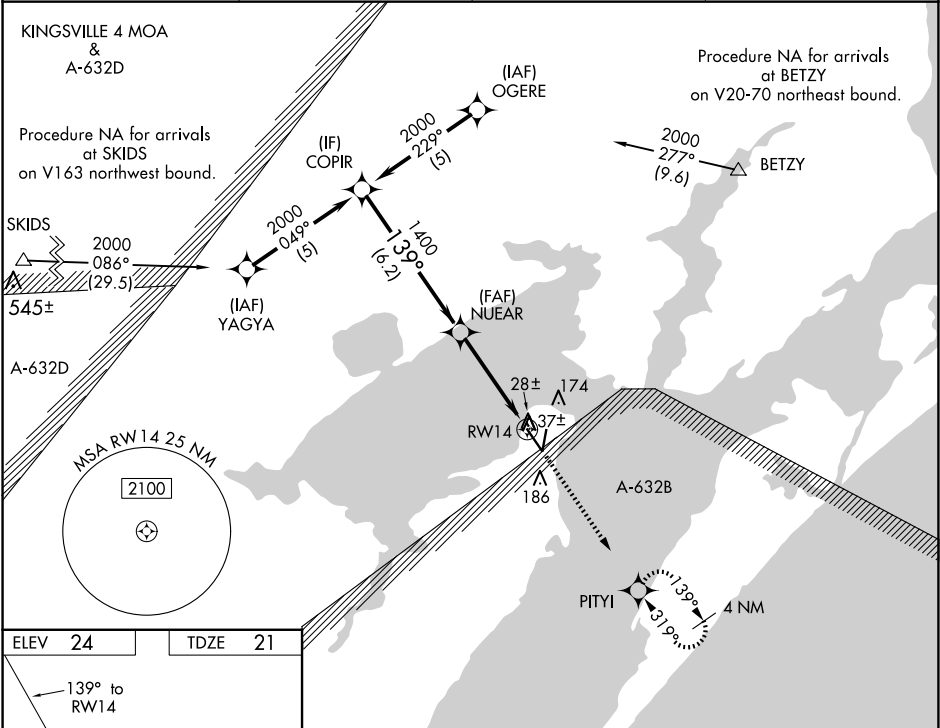
Rwy Idg **5608**
TDZE **21**
Apt Elev **24**

RNAV (GPS) RWY 14
ARANSAS COUNTY (RKP)

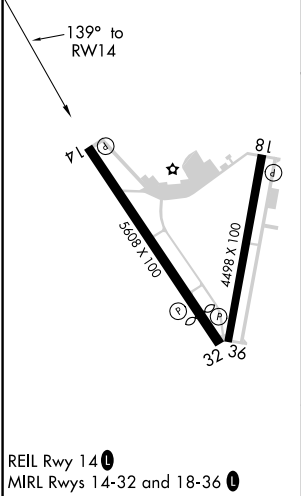
Baro-VNAV NA when using Ingleside altimeter setting. For uncompensated Baro-VNAV systems, LNAV/VNAV NA below -15°C (5°F) or above 54°C (130°F). DME/DME RNP-0.3 NA. Helicopter visibility reduction below ¾ SM NA. When local altimeter setting not received, use Ingleside altimeter setting and increase all DA 33 feet and all MDA 40 feet increase LNAV/VNAV all Cats visibility ¼ mile. VDP NA with Ingleside altimeter setting.

MISSED APPROACH:
Climb to 2000 direct PITYI and hold.

ASOS 119.275	CORPUS APP CON 120.9 348.725	CLNC DEL 121.7	UNICOM 123.05 (CTAF) 0
------------------------	--	--------------------------	----------------------------------



ELEV 24	TDZE 21
----------------	----------------



Procedure Turn NA		* LNAV only		2000	PITYI
COPIR		NUEAR		1400	
2000		139°		1400	
GP 3.00°		1400			
TCH 35		6.2 NM		3.3 NM	0.9 NM
CATEGORY	A	B	C	D	
LPV DA	271-1	250 (300-1)		NA	
LNAV/VNAV DA	378-1¼	357 (400-1¼)		NA	
LNAV MDA	320-1	299 (300-1)		NA	
CIRCLING	500-1	476 (500-1)	500-1½	476 (500-1½)	NA