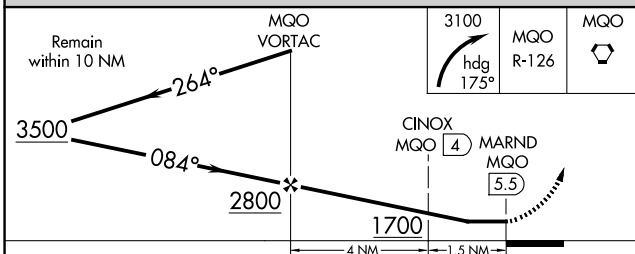
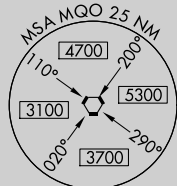




VOR or TACAN-A
SAN LUIS OBISPO COUNTY RGNI (SBP)

MISSED APPROACH: Climbing right turn to 3100 via heading 175° and MQO R-126 to MQO VORTAC and hold. (TACAN Aircraft continue climb to 4000 via MQO R-292 to FRAMS 11.2 DME and hold east, right turns, 292° inbound.)

[illegible]

CATEGORY	A	B	C	D	HIRL Rwy 11-29  REIL Rwy 29 												
CIRCLING	1700-1¼ 1488 (1500-1¼)	1700-1½ 1488 (1500-1½)	1700-3	1488 (1500-3)													
TACAN OR DME MINIMA					FAF to MAP 5.5 NM												
CIRCLING	1120-1¼ 908 (1000-1¼)	1220-1½ 1008 (1100-1½)	1460-3 1248 (1300-3)	1560-3 1348 (1400-3)	<table border="1"> <tr> <td>Knots</td><td>60</td><td>90</td><td>120</td><td>150</td><td>180</td></tr> <tr> <td>Min:Sec</td><td>5:30</td><td>3:40</td><td>2:45</td><td>2:12</td><td>1:50</td></tr> </table>	Knots	60	90	120	150	180	Min:Sec	5:30	3:40	2:45	2:12	1:50
Knots	60	90	120	150	180												
Min:Sec	5:30	3:40	2:45	2:12	1:50												

SW-3, 07 AUG 2025 to 04 SEP 2025