

WAAS CH 53443 W29A	APP CRS 290°	Rwy Idg TDZE Apt Elev	5600 212 212
--	------------------------	-----------------------------	---

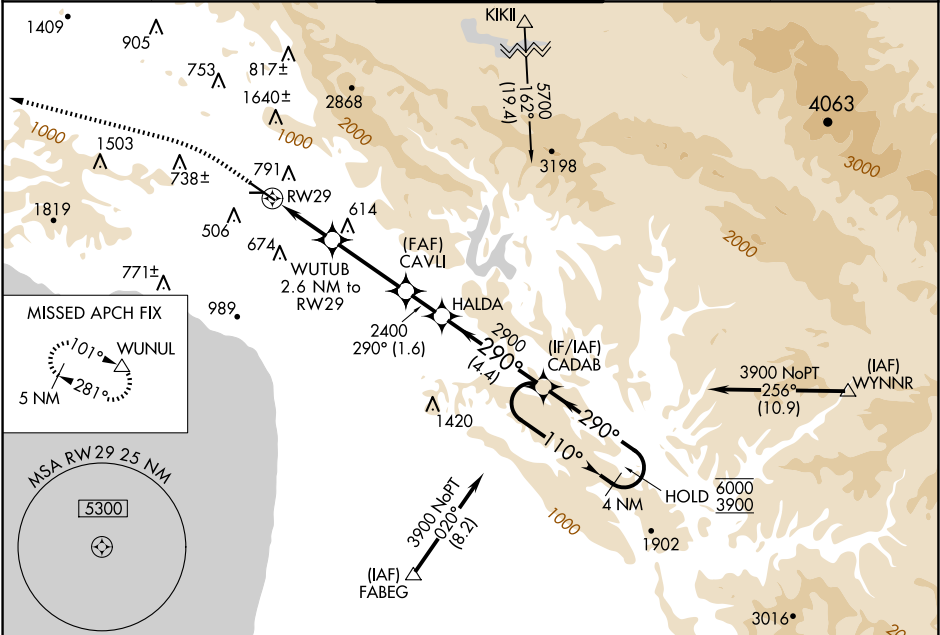
RNAV (GPS) RWY 29

SAN LUIS OBISPO COUNTY RGNL (SBP)

RNP APCH

- ⚠ Circling to Rwy 25 NA at night. Circling NA north of Rwy 11-29.
Rwy 29 helicopter visibility reduction below $\frac{3}{4}$ SM NA. For uncompensated Baro-VNAV systems, LNAV/VNAV NA below 0° C or above 52° C.
- MISSED APPROACH: Climb to 1100 then climbing left turn to 4100 direct WUNUL and hold, continue climb-in-hold to 4100.

ATIS 120.6	SANTA BARBARA APP CON* 127.725 244.575	SAN LUIS TOWER* 124.0 (CTAF) 0 379.9	GND CON 121.6	UNICOM 122.95
----------------------	--	--	-------------------------	-------------------------



ELEV 212	D	TDZE 212
----------	----------	----------

Procedure NA for arrivals at FABEG on V27, T261 southeast bound.

	1100	4100	WUNUL	
	↑	↶	△	
	*LNAV only			
	2.6 NM	3.2 NM	1.6 NM	4.4 NM
CATEGORY	A	B	C	D
LPV DA	831-1 $\frac{3}{4}$ 619 (700-1 $\frac{3}{4}$)			
LNAV/VNAV DA	835-1 $\frac{3}{4}$ 623 (700-1 $\frac{3}{4}$)			
LNAV MDA	1000-1 788 (800-1)	1000-1 $\frac{1}{4}$ 788 (800-1 $\frac{1}{4}$)	1000-2 $\frac{1}{2}$ 788 (800-2 $\frac{1}{2}$)	1560-3 1348 (1400-3)
C CIRCLING	1000-1 788 (800-1)	1220-1 $\frac{1}{2}$ 1008 (1100-1 $\frac{1}{2}$)	1460-3 1248 (1300-3)	1560-3 1348 (1400-3)