

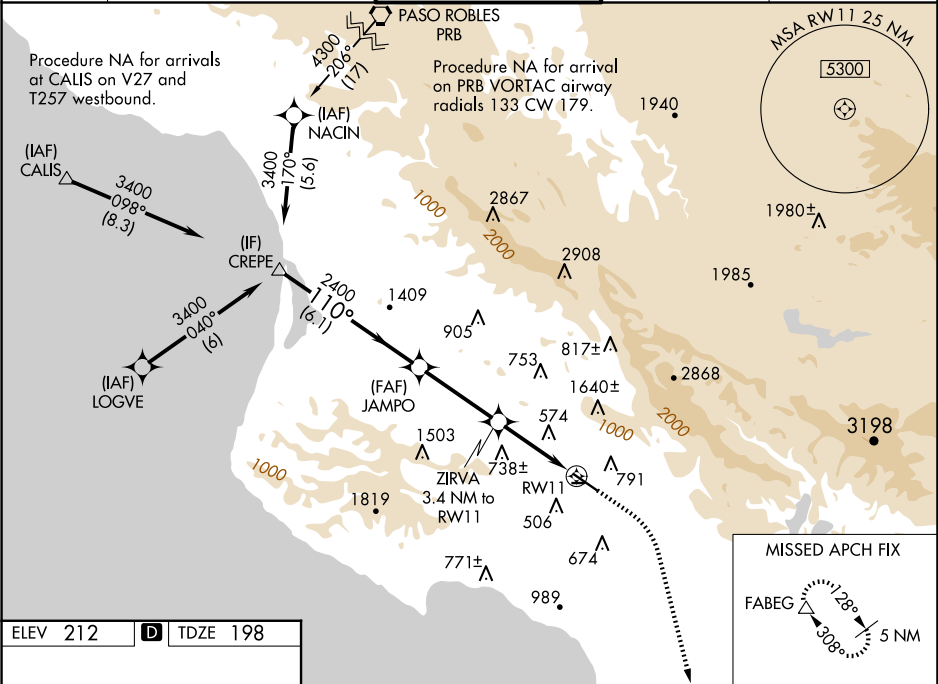
WAAS CH 50328 W11A	APP CRS 110°	Rwy Idg TDZE 198 Apt Elev 212
--	------------------------	---

RNAV (GPS) RWY 11

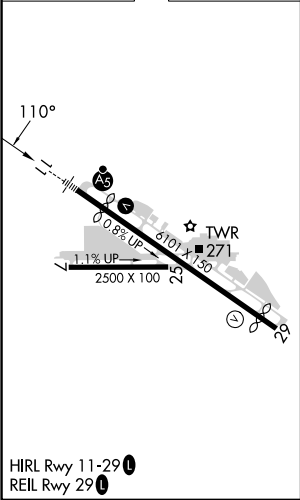
SAN LUIS OBISPO COUNTY RGNL (SBP)

RNP APCH.	<div><div>▼</div><div>▲</div></div> Circling NA north of Rwy 11-29. Circling Rwy 25 NA at night. For uncompensated Baro-VNAV systems, LNAV/VNAV NA below 0°C or above 54°C. For inop ALS, increase LNAV/VNAV all Cats visibility to 2 SM.	MALSR <div><div>A5</div><div></div></div>	MISSED APPROACH: Climb to 1000 then climbing right turn to 4800 direct FABEG and hold, continue climb-in-hold to 4800.
-----------	--	--	--

ATIS 120.6	SANTA BARBARA APP CON* 127.725 244.575	SAN LUIS TOWER* 124.0 (CTAF) 0 379.9	GND CON 121.6	UNICOM 122.95
----------------------	--	--	-------------------------	-------------------------



ELEV 212	D	TDZE 198
----------	----------	----------



CREPE		JAMPO	ZIRVA	FABEG
3400		2400	3.4 NM to RW11	1000 4800
GP 3.00° TCH 49			*1.9 NM to RW11	
110°			*1280	
2400				
6.1 NM		3.5 NM	1.5 NM	1.9 NM
CATEGORY	A	B	C	D
LPV DA	398-½		200 (200-½)	
LNAV/VNAV DA	946-1¾		748 (800-1¾)	
LNAV MDA	840-½ 642 (700-½)		840-1⅔ 642 (700-1⅔)	
CIRCLING	840-1 628 (700-1)	1220-1½ 1008 (1100-1½)	1460-3 1248 (1300-3)	1560-3 1348 (1400-3)