

LOC I-SBP  
**109.7**

APP CRS  
**110°**

Rwy ldg **5300**  
TDZE **198**  
Apt Elev **212**

ILS or LOC RWY 11

SAN LUIS OBISPO COUNTY RGNL (SBP)

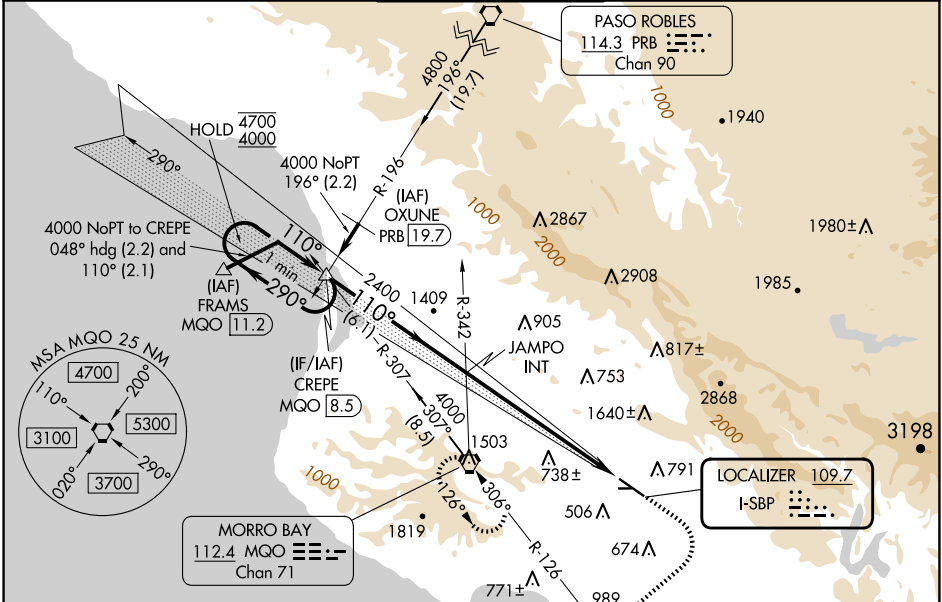
⚠

Circling Rwy 25 NA at night. Circling NA north of Rwy 11-29. Autopilot coupled approach NA below 677'. For inop ALS, increase S-ILS 11 all Cats visibility to ¾ SM, S-LOC 11 Cat A visibility to 1 ¼ SM, Cat B visibility to 1 ½ SM.

MALSR

MISSED APPROACH: Climb to 1000 then climbing right turn to 3300 on heading 215° and MQO VORTAC R-126 to MQO VORTAC and hold, continue climb-in-hold to 3300. S-ILS 11\* missed approach requires minimum climb of 210 feet per NM to 1160.

ATIS <b>120.6</b>	SANTA BARBARA APP CON* <b>127.725 244.575</b>	SAN LUIS TOWER* <b>124.0 (CTAF) 0 379.9</b>	GND CON <b>121.6</b>	UNICOM <b>122.95</b>
----------------------	--	--	-------------------------	-------------------------



ELEV 212 | **D** | TDZE 198

REIL Rwy 29 **0**  
HIRL Rwy 11-29 **0**

FAF to MAP 6.9 NM

Knots	60	90	120	150	180
Min:Sec	6:54	4:36	3:27	2:46	2:18

CATEGORY	CREPE MQO 8.5				1000 3300 MQO			
	One Minute Holding Pattern				MQO R-126			
	4700 ← 290° 4000 → 110°				hdg 215°			
	GS 3.00° TCH 49				JAMPO INT 2400			
	6.1 NM				6.9 NM			
S-ILS 11*	A				B			
	398-½				200 (200-½)			
	S-ILS 11				495-½			
	1420-¾ 1222 (1300-¾)				1420-1 1222 (1300-1)			
S-LOC 11	1420-3				1420-3			
	1222 (1300-3)				1222 (1300-3)			
	CIRCLING				1420-1¼ 1208 (1300-1¼)			
	1420-1½ 1208 (1300-1½)				1500-3 1288 (1300-3)			
S-LOC 11	1420-1				1420-1			
	1222 (1300-1)				1222 (1300-1)			
	1420-3				1420-3			
	1222 (1300-3)				1222 (1300-3)			
CIRCLING	1420-1¼ 1208 (1300-1¼)				1420-1½ 1208 (1300-1½)			
	1420-1½ 1208 (1300-1½)				1500-3 1288 (1300-3)			
	1420-3				1420-3			
	1222 (1300-3)				1222 (1300-3)			