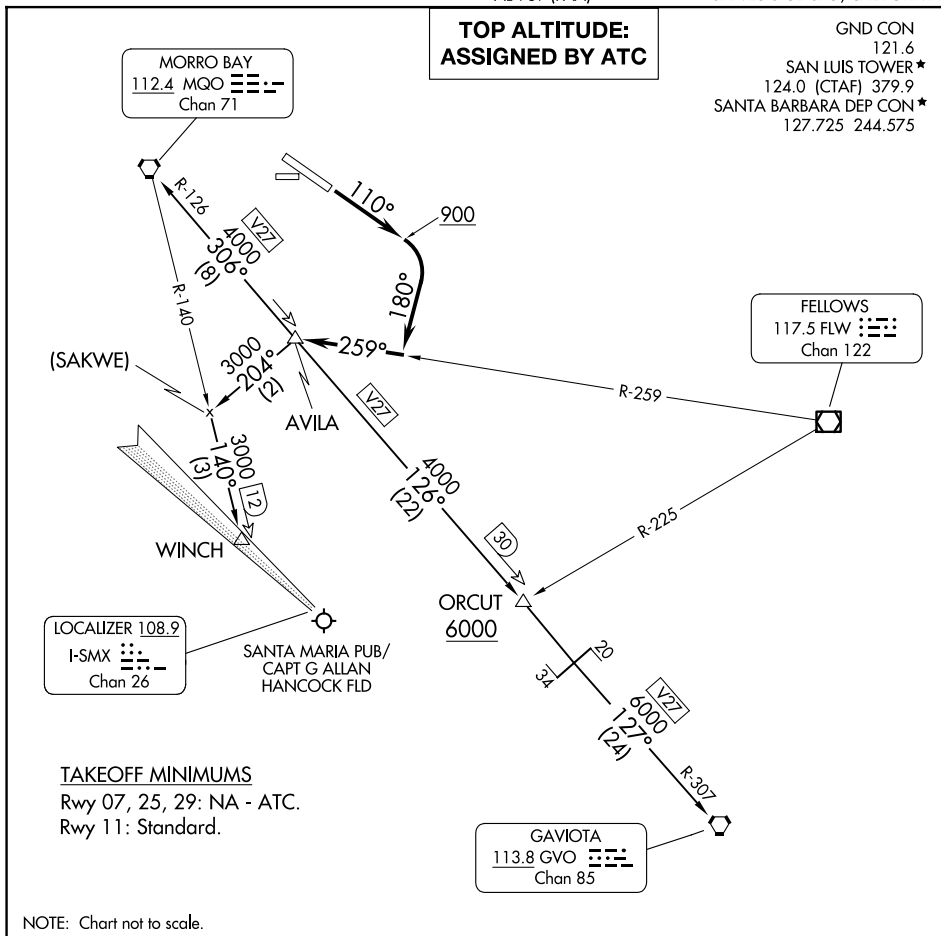


AVILA FOUR DEPARTURE

AL-989 (FAA)

SAN LUIS OBISPO, CALIFORNIA



T

DEPARTURE ROUTE DESCRIPTION

TAKEOFF RUNWAY 11: Climb on heading 110° to 900, then climbing right turn heading 180° to intercept the FLW VOR/DME R-259 to AVILA INT, then on assigned transition or assigned route. Maintain ATC assigned altitude.

GAVIOTA TRANSITION (AVILA4.GVO): From over AVILA on MQO R-126 to ORCUT , then on MQO R-126 and GVO R-307 to GVO VORTAC.

MORRO BAY TRANSITION (AVILA4.MQO): From over AVILA on MQO R-126 to MQO VORTAC.

WINCH TRANSITION (AVILA4.WINCH): From over AVILA on heading 204° to SAKWE, then on MQO R-140 to WINCH.

AVILA FOUR DEPARTURE

(AVILA4.AVILA) 30JAN20

SAN LUIS OBISPO, CALIFORNIA

SAN LUIS OBISPO COUNTY RGNL (SBP)

SW-3, 07 AUG 2025 to 04 SEP 2025