

WAAS CH <b>49119</b> <b>W19B</b>	APP CRS <b>196°</b>	Rwy Ldg TDZE Apt Elev	<b>7302</b> <b>1320</b> <b>1333</b>
--	------------------------	-----------------------------	---

RNAV (GPS) Y RWY 19L

WICHITA DWIGHT D EISENHOWER NTL (ICT)

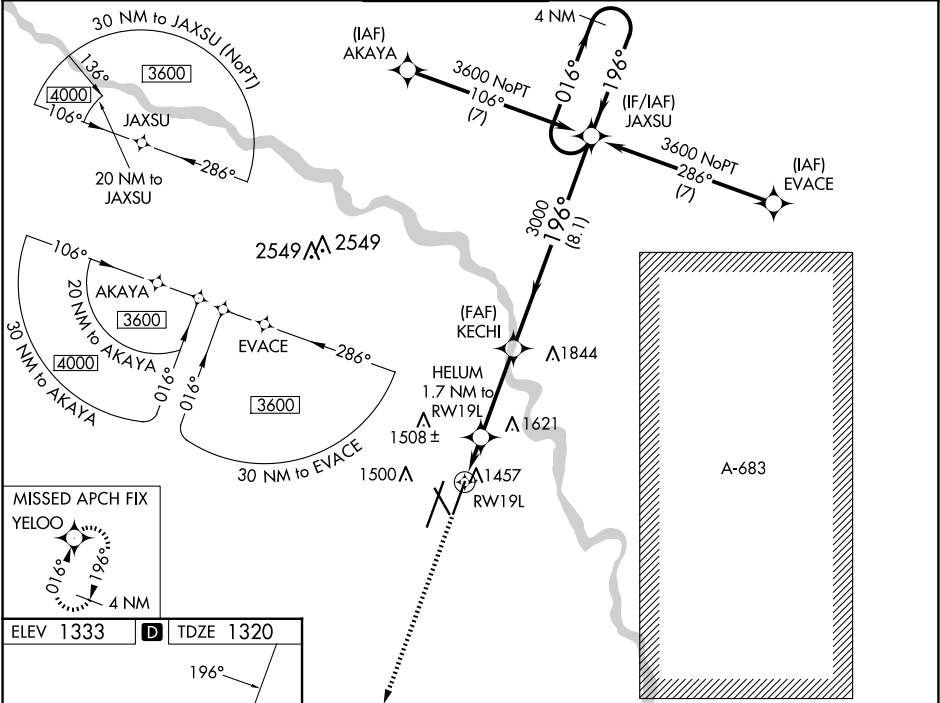
RNP APCH.

▼ For uncompensated Baro-VNAV systems, LNAV/VNAV NA below -15°C (5°F) or above 54°C (130°F). Simultaneous approach authorized with ILS or LOC RWY 19R. LNAV procedure NA during simultaneous operations. Use of FD or AP providing RNAV track guidance required during simultaneous operations.

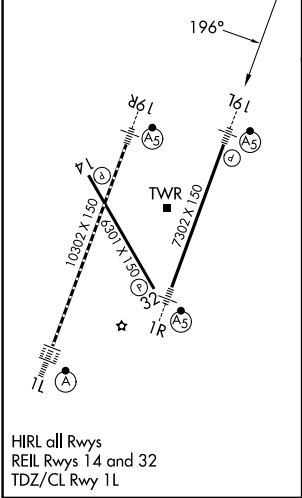
MALSR

MISSED APPROACH:  
Climb to 3600 direct YELOO and hold.

ATIS <b>125.15</b>	WICHITA APP CON <b>126.7 353.5</b>	WICHITA TOWER <b>118.2 257.8</b>	GND CON <b>121.9 348.6</b>	CLNC DEL <b>125.7</b>
-----------------------	---------------------------------------	-------------------------------------	-------------------------------	--------------------------



ELEV 1333	<b>D</b>	TDZE 1320
-----------	----------	-----------



3600 ↑	YELOO ✦	HELMUM 1.7 NM to RW19L	KECHI 3000	JAXSU	4 NM Holding Pattern
*LNAV only.		*1.1 NM to RW19L			
RW19L		1900*	196°	3000	016° → ← 196° 3600
1.1 NM		0.6	3.4 NM	8.1 NM	GP 3.00° TCH 54
CATEGORY		A	B	C	D
LPV DA			1520-½	200 (200-½)	
LNAV/VNAV DA			1747-¾	427 (500-¾)	
LNAV MDA	1780-½ 460 (500-½)		1780-⅞ 460 (500-⅞)		
CIRCLING	1800-1 467 (500-1)		1980-1¼ 647 (700-1¼)	1980-2 647 (700-2)	

NC-2, 07 AUG 2025 to 04 SEP 2025

NC-2, 07 AUG 2025 to 04 SEP 2025