

APP CRS	Rwy Ldg	10302
016°	TDZE	1314
	Apt Elev	1333

RNAV (RNP) Z RWY 1L

WICHITA DWIGHT D EISENHOWER NTL (ICT)

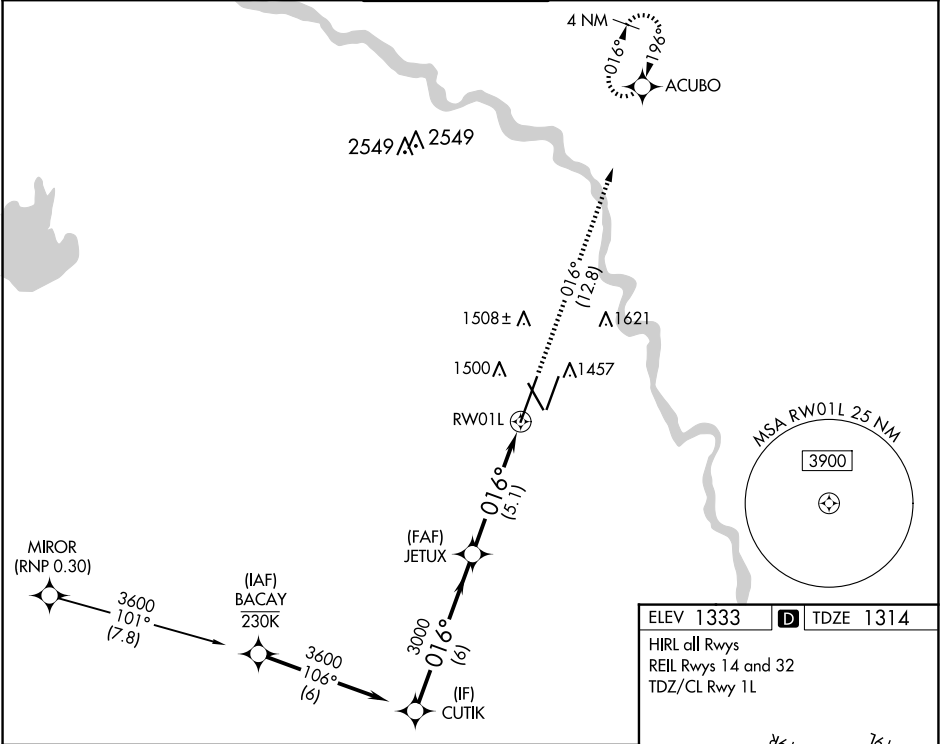
RNP AR APCH

Simultaneous approach authorized. Use of FD or AP providing RNAV track guidance required during simultaneous operations. For uncompensated Baro-VNAV systems, procedure NA below -15°C or above 54°C. For inop ALS, increase RNP 0.15 all Cats visibility to RVR 4500 and RNP 0.30 all Cats visibility to RVR 5500.

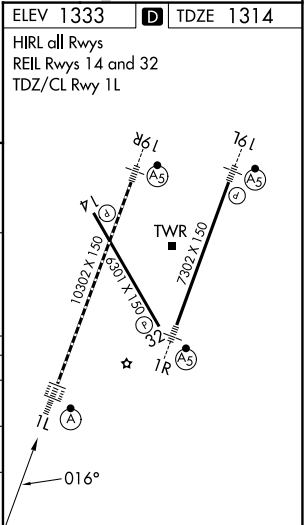
ALSF-2

MISSED APPROACH:  
Climb to 4200 on track 016° to ACUBO and hold.

ATIS 125.15	WICHITA APP CON 126.7 353.5	WICHITA TOWER 118.2 257.8	GND CON 121.9 348.6	CLNC DEL 125.7
----------------	--------------------------------	------------------------------	------------------------	-------------------



CUTIK		JETUX		4200	ACUBO
3600		3000		fr 016°	
GP 3.00°		3000		RW01L	
TCH 52		6 NM		5.1 NM	
CATEGORY	A	B	C	D	
RNP 0.15 DA	1626/28		312 (300-5%)		
RNP 0.30 DA	1676/35		362 (400-5%)		
AUTHORIZATION REQUIRED					



NC-2, 07 AUG 2025 to 04 SEP 2025

NC-2, 07 AUG 2025 to 04 SEP 2025