

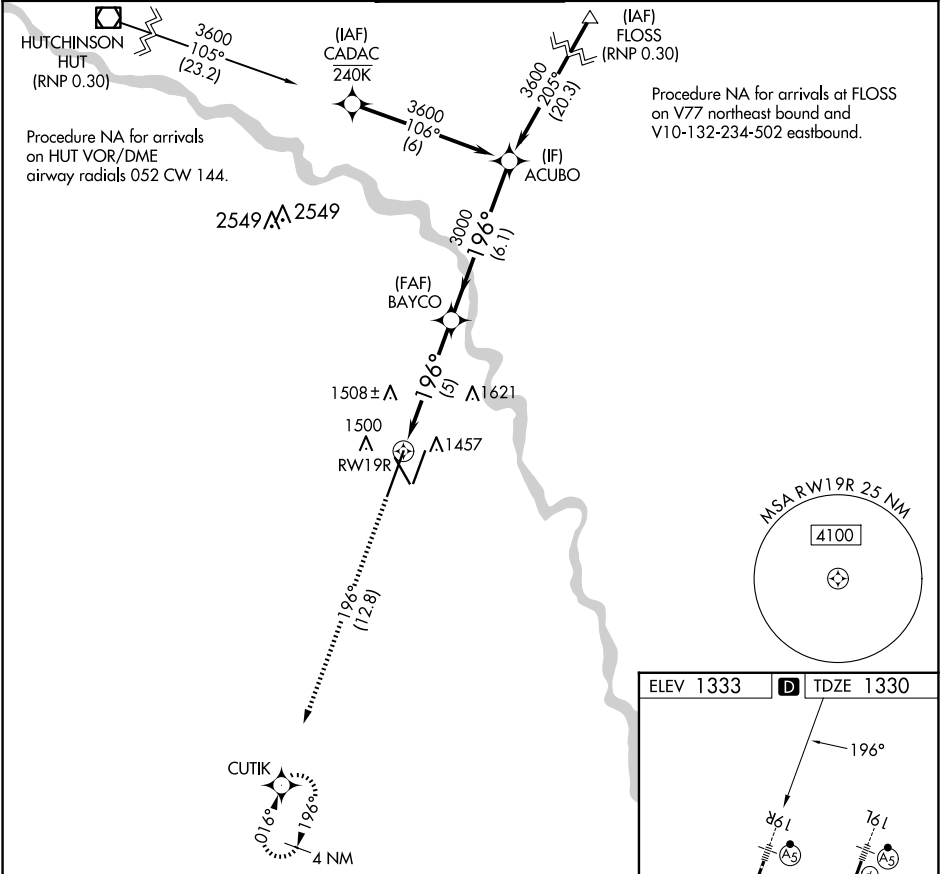
APP CRS	Rwy Ldg	10302
196°	TDZE	1330
	Apt Elev	1333

RNAV (RNP) Z RWY 19R

WICHITA DWIGHT D EISENHOWER NTL (ICT)

<div><div>▼</div><div>For uncompensated Baro-VNAV systems, procedure NA below -15°C (5°F) or above 54°C (130°F). For inoperative MALS, increase all Cats visibility to 1 ¼ mile. GPS required.</div></div>	<div><div>MALS</div><div><div>AS</div><div></div></div></div>	<div>MISSED APPROACH: Climb to 4200 on track 196° to CUTIK and hold.</div>
--	---	--

ATIS 125.15	WICHITA APP CON 126.7 353.5	WICHITA TOWER 118.2 257.8	GND CON 121.9 348.6	CLNC DEL 125.7
----------------	--------------------------------	------------------------------	------------------------	-------------------



4200	CUTIK	BAYCO	ACUBO
tr 196°	<div><div></div><div></div></div>	3000	3600
RW19R		3000	GP 3.00° TCH 52
CATEGORY	A	B	C
RNP 0.30 DA	1727/50 397 (400-1)		
AUTHORIZATION REQUIRED			

