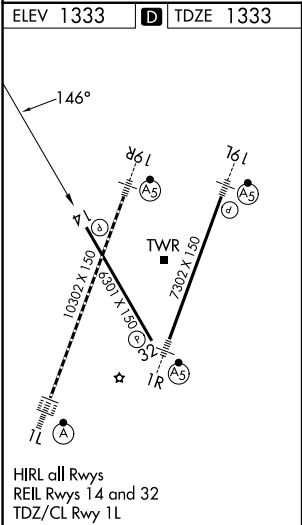
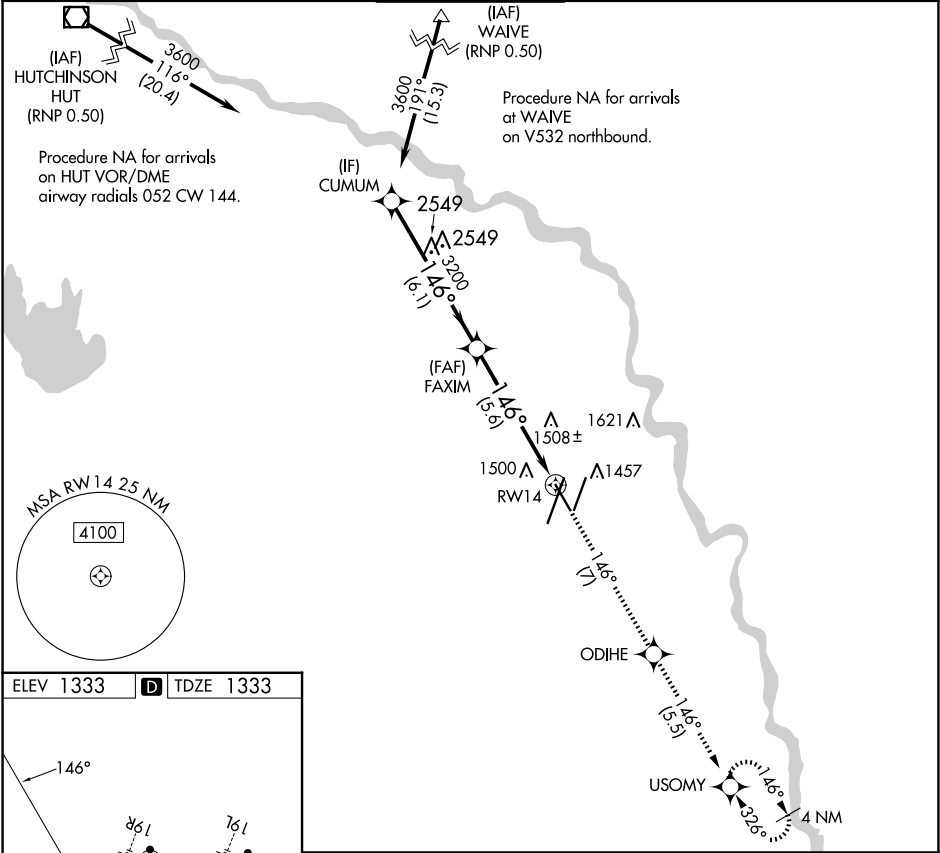


APP CRS	Rwy Ldg	6301
146°	TDZE	1333
	Apt Elev	1333

RNAV (RNP) Z RWY 14
WICHITA DWIGHT D EISENHOWER NTL (ICT)

For uncompensated Baro-VNAV systems, procedure NA below -15°C (5°F) or above 54°C (130°F). GPS required.	MISSED APPROACH: Climb to 3600 on track 146° to ODIHE and on track 146° to USOMY and hold.
---	--

ATIS 125.15	WICHITA APP CON 126.7 353.5	WICHITA TOWER 118.2 257.8	GND CON 121.9 348.6	CLNC DEL 125.7
----------------	--------------------------------	------------------------------	------------------------	-------------------



VGSI and RNAV glidepath not coincident (VGSI Angle 3.00/TCH 50).			
CUMUM	FAXIM	ODIHE	USOMY
3600	3200	3600	3200
GP 3.00°			
TCH 50			
	6.1 NM	5.6 NM	
CATEGORY	A	B	C
RNP 0.11 DA		1682-1 349 (400-1 3)	
RNP 0.30 DA		1732-1 399 (400-1 3)	
AUTHORIZATION REQUIRED			