

VOR/DME MFE 117.2 Chan 119	APP CRS 305°	Rwy Idg 7120 TDZE 102 Apt Elev 107
--	------------------------	---

VOR RWY 32
MC ALLEN INTL (MFE)

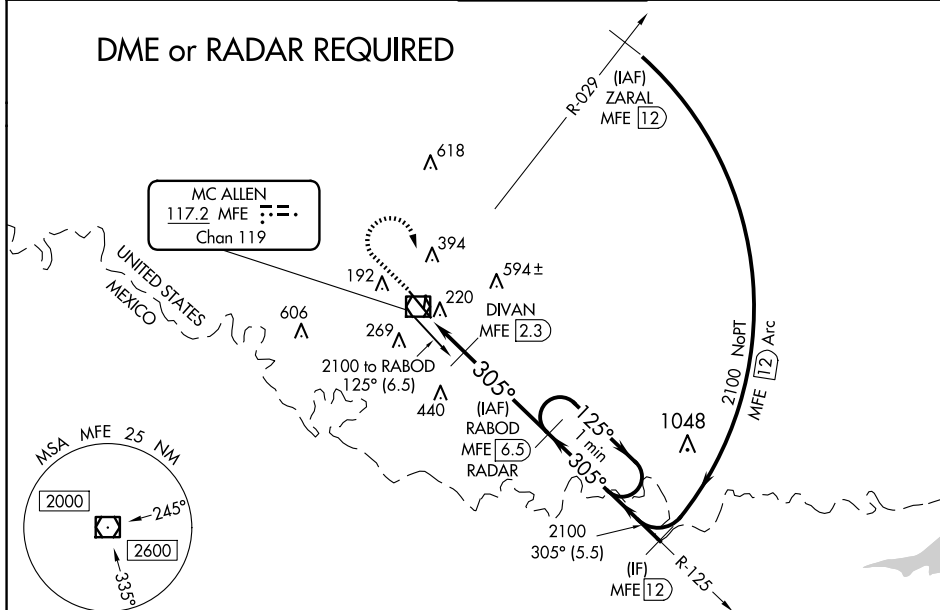
TA

Circling NA northeast of Rwy 14-32. When local altimeter setting not received, use Weslaco altimeter setting and increase all MDA 40 feet and S-32 Cat C/D and Circling Cat C visibility $\frac{1}{8}$ mile, increase DIVAN Fix Minimums S-32 Cat C/D visibility $\frac{1}{8}$ mile. VDP NA when using Weslaco altimeter setting.

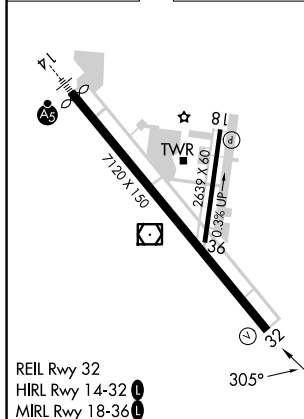
MISSED APPROACH: Climb to 900 then climbing right turn to 2100 direct MFE VOR/DME.

ATIS 128.5	VALLEY APP CON 126.55 377.2	MC ALLEN TOWER★ 118.5 (CTAF) 0 256.9	GND CON 121.8	UNICOM 122.95
---------------	--------------------------------	---	------------------	------------------

DME or RADAR REQUIRED



ELEV 107	D	TDZE 102
----------	----------	----------



FAF to MAP 5.9 NM					
Knots	60	90	120	150	180
Min:Sec	5:54	3:56	2:57	2:22	1:58

MC ALLEN, TEXAS
Amdt 2 10DEC15

26°11'N-98°14'W

MC ALLEN INTL (MFE)
VOR RWY 32

SC-3, 07 AUG 2025 to 04 SEP 2025

SC-3, 07 AUG 2025 to 04 SEP 2025