

WAASTW32A

CH78001

APP CRS

317°

Rwy Idg

7120

TDZE

102

Apt Elev

107

RNAV (GPS) RWY 32

MC ALLEN INTL (MFE)

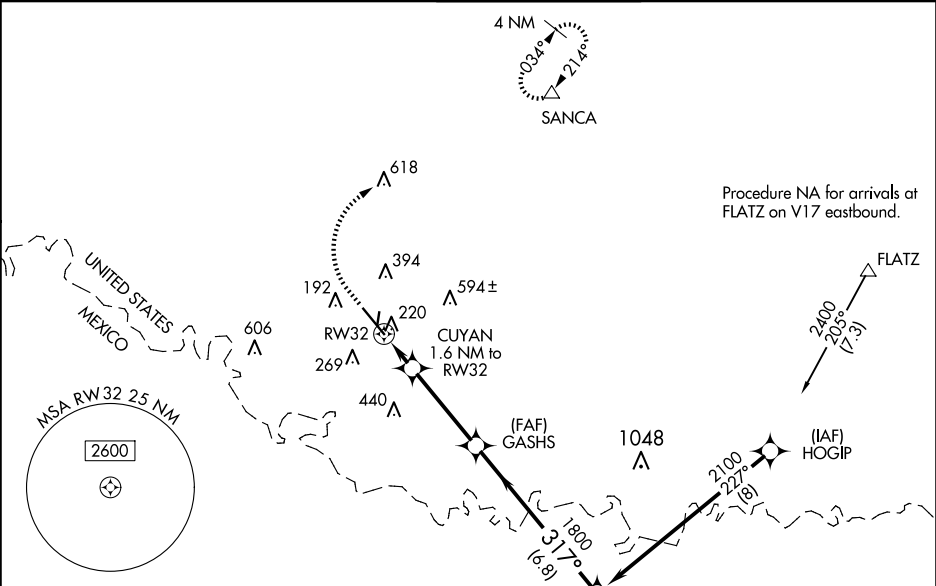
⚠

⚠

For uncompensated Baro-VNAV systems, LNAV/VNAV NA below 1°C (34°F) or above 54°C (130°F). Circling NA northeast of Rwy 14-32. DME/DME RNP-0.3 NA. When local altimeter setting not received, use Weslaco altimeter setting: increase all DA 39 feet and LNAV/VNAV all Cat visibility ¼ mile; increase all MDA 40 feet and LNAV Cat C/D visibility ½ mile. Baro-VNAV and VDP NA when using Weslaco altimeter setting.

MISSED APPROACH: Climb to 800 then climbing right turn to 2000 direct SANCA and hold.

ATIS 128.5	VALLEY APP CON 126.55 377.2	MC ALLEN TOWER * 118.5 (CTAF) 256.9	GND CON 121.8	UNICOM 122.95
---------------	--------------------------------	--	------------------	------------------



ELEV 107

TDZE 102

800

2000

SANCA

VGSI and RNAV glidepath not coincident (VGSI Angle 3.00°/TCH 53).

\*LNAV only

FOVUD

GASHS

CUYAN 1.6 NM to RW32

\*1 NM to RW32

RW32

\*660

1800

2100

317°

GP 3.00°

TCH 50

	1 NM	0.6	3.6 NM	6.8 NM	
CATEGORY	A	B	C	D	
LPV DA	302-¾ 200 (200-¾)				
LNAV/VNAV DA	391-⅞ 289 (300-⅞)				
LNAV MDA	480-1 378 (400-1)				
CIRCLING	580-1	473 (500-1)	580-1½ 473 (500-1½)	800-2¼ 693 (700-2¼)	

REIL Rwy 32

HIRL Rwy 14-32

MIRL Rwy 18-36

TWR

7120 X 150

2639 X 60

317°