

WAAS
CH **78400**
W**14A**

APP CRS
137°

Rwy Idg **6983**
TDZE **107**
Apt Elev **107**

RNAV (GPS) RWY 14

MC ALLEN INTL (MFE)

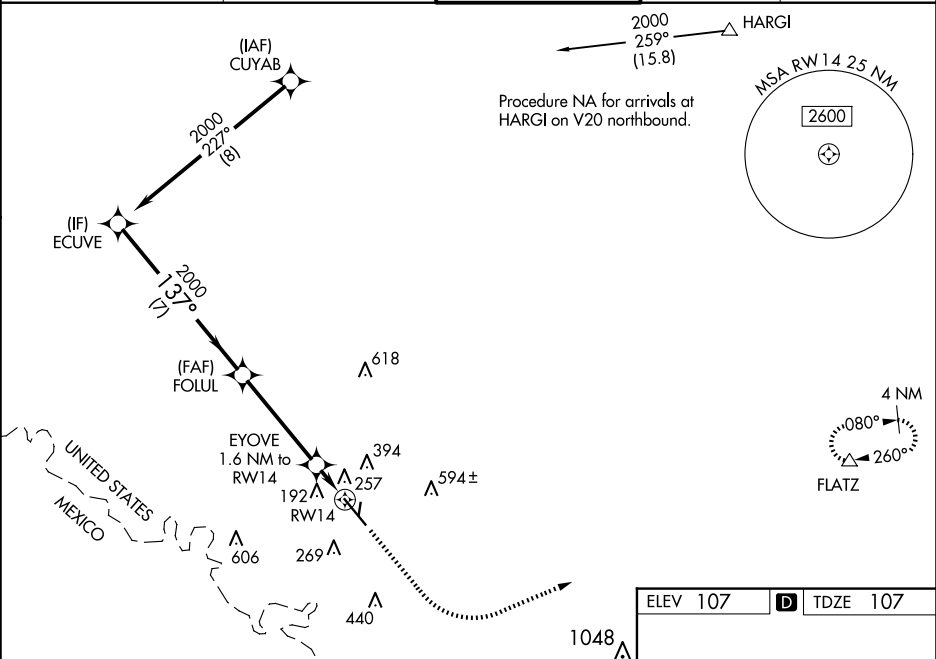
RNP APCH-GPS.

⚠ Circling NA northeast of Rwy 14-32. For inop ALS, increase LNAV/VNAV visibility all Cats to ¾ SM and LNAV visibility Cat C/D to 1 ½ SM. For inop ALS when using Weslaco altimeter setting, increase LNAV/VNAV visibility all Cats to 1 SM. For uncompensated Baro-VNAV systems, LNAV/VNAV NA below 1°C or above 54°C. When local altimeter setting not received, use Weslaco altimeter setting and increase all DA 39 feet and LNAV/VNAV all Cats visibility ½ SM; increase all MDA 40 feet and LNAV Cat C/D visibility ½ SM.

MALSR

MISSED APPROACH:
Climb to 1500 then climbing left turn to 3000 direct FLATZ and hold.

ATIS 128.5	VALLEY APP CON 126.55 377.2	MC ALLEN TOWER ★ 118.5 (CTAF) 0 256.9	GND CON 121.8	UNICOM 122.95
----------------------	---------------------------------------	---	-------------------------	-------------------------



ELEV 107

D

TDZE 107

1500

3000

FLATZ

GP 3.00°

TCH 60

ECUVE

FOLUL

EYOVE 1.6 NM to RWY 14

RWY 14

2000

2000

2000

660

7 NM

4.2 NM

1.6 NM

*LNAV only

137°

1048

137°

7120 X 150

2639 X 80

2033 X 36

81

36

30

CATEGORY	A	B	C	D
LPV DA	307-½ 200 (200-½)			
LNAV/VNAV DA	418-½ 311 (400-½)			
LNAV MDA	520-½ 413 (500-½)	520-¾ 413 (500-¾)		
CIRCLING	580-1 473 (500-1)	580-1½ 800-2¼ 473 (500-1½) 693 (700-2¼)		

REIL Rwy 32

HIRL Rwy 14-32 0

MIRL Rwy 18-36 0