

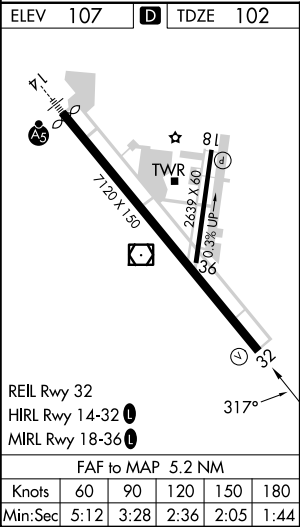
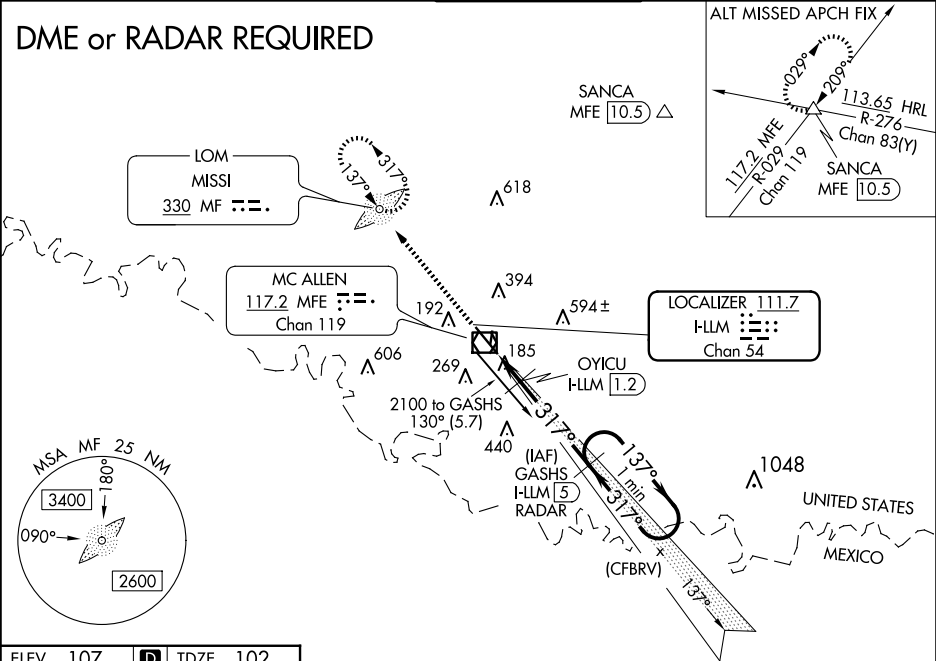
LOC/DME I-LLM 111.7 Chan 54	APP CRS 317°	Rwy Idg 7120 TDZE 102 Apt Elev 107
---	------------------------	---




ILS or LOC RWY 32
MC ALLEN INTL (MF'E)

 <div>Circling NA northeast of Rwy 14-32. ADF and DME or Radar required. When local altimeter setting not received, use Weslaco altimeter setting: increase all DA 39 feet and MDA 40 feet.</div>	MISSED APPROACH: Climb to 2100 direct MF LOM and hold
--	--

ATIS 128.5	VALLEY APP CON 126.55 377.2	MC ALLEN TOWER ★ 118.5 (CTAF) 256.9	GND CON 121.8	UNICOM 122.95
----------------------	---------------------------------------	---	-------------------------	-------------------------

DME or RADAR REQUIRED



2100		VGSi and ILS glidepath not coincident (VGSi Angle 3.00/TCH 53).	GASHS I-LLM 5 RADAR	One Minute Holding Pattern
*LOC only	OYICU I-LLM 1.2		1800	137° → 2100
				← 317°
				GS 3.00° TCH 50
				*600 when using Weslaco altimeter setting.
	1.4 NM	3.8 NM		
CATEGORY	A	B	C	D
S-ILS 32		302-3/4	200 (200-3/4)	
S-LOC 32	560-1	458 (500-1)	560-1 3/8	458 (500-1 3/8)
 CIRCLING	580-1	473 (500-1)	580-1 1/2	800-2 1/4
			473 (500-1 1/2)	693 (700-2 1/4)
	OYICU FIX MINIMUMS			
S-LOC 32		440-1	338 (400-1)	
 CIRCLING	580-1	473 (500-1)	580-1 1/2	800-2 1/4
			473 (500-1 1/2)	693 (700-2 1/4)