

LOC/DME I-MFE
111.7
Chan **54**

APP CRS
137°

Rwy Idg **6983**
TDZE **107**
Apt Elev **107**

ILS or LOC RWY 14

MC ALLEN INTL (MF'E)

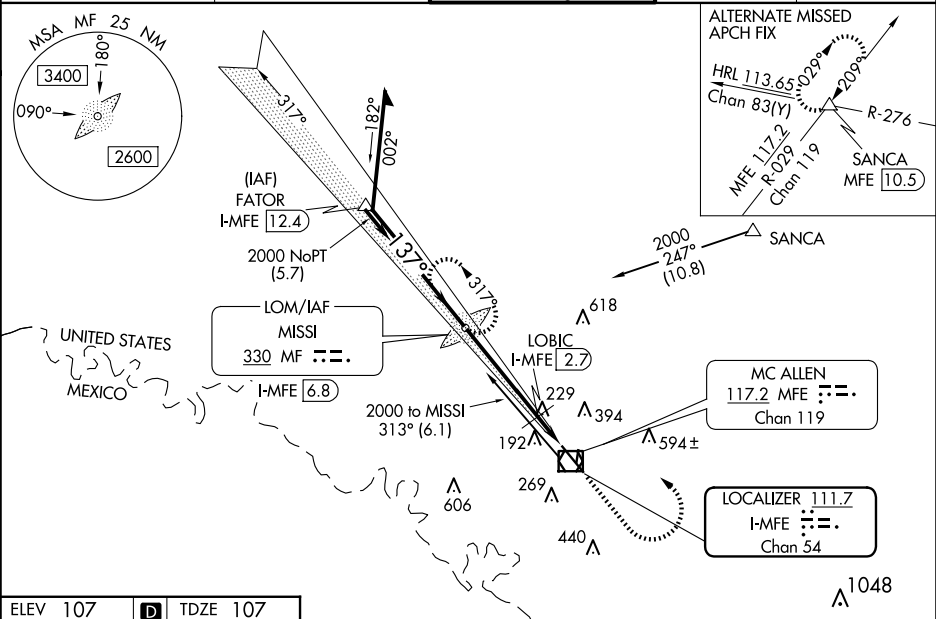
ADF required.

⚠ Circling NA northeast of Rwy 14-32. When local altimeter setting not received, use Weslaco altimeter setting: increase all DA 39 feet; increase all MDA 40 feet and S-LOC 14 Cat C/D and Circling Cat C visibility 1/8 mile, increase LOBIC Fix Minimums S-LOC 14 Cat C/D visibility 1/4 mile. For inop ALS, increase S-LOC 14 Cat C/D visibility to 1 3/8 SM. For inop ALS when using Weslaco altimeter setting, increase LOBIC Fix Minimums S-LOC 14 Cat C/D visibility to 1 3/8 SM.

MALSR

MISSED APPROACH:
Climb to 1500 then climbing left turn to 2000 direct to MISSI LOM and hold.

ATIS 128.5	VALLEY APP CON 126.55 377.2	MC ALLEN TOWER★ 118.5 (CTAF) 256.9	GND CON 121.8	UNICOM 122.95
----------------------	---------------------------------------	--	-------------------------	-------------------------



ELEV 107 D TDZE 107

REIL Rwy 32
HIRL Rwy 14-32
MIRL Rwy 18-36

Remain within 10 NM	MISSI LOM/I-MFE 6.8	1500	2000	MF
2000	317°	1952	LOBIC I-MFE 2.7	I-MFE 1.3
GS 3.00°	137°			
TCH 56	2000			
*660 when using Weslaco altimeter setting.			*620	
	4.1 NM	1.4 NM		
CATEGORY	A	B	C	D
S-ILS 14	307-1/2 200 (200-1/2)			
S-LOC 14	620-1/2	513 (600-1/2)	620-1	513 (600-1)
CIRCLING	620-1	513 (600-1)	620-1 1/2 513 (600-1 1/2)	800-2 1/4 693 (700-2 1/4)
LOBIC FIX MINIMUMS				
S-LOC 14	540-1/2	433 (500-1/2)	540-3/4	433 (500-3/4)
CIRCLING	580-1	473 (500-1)	580-1 1/2 473 (500-1 1/2)	800-2 1/4 693 (700-2 1/4)