

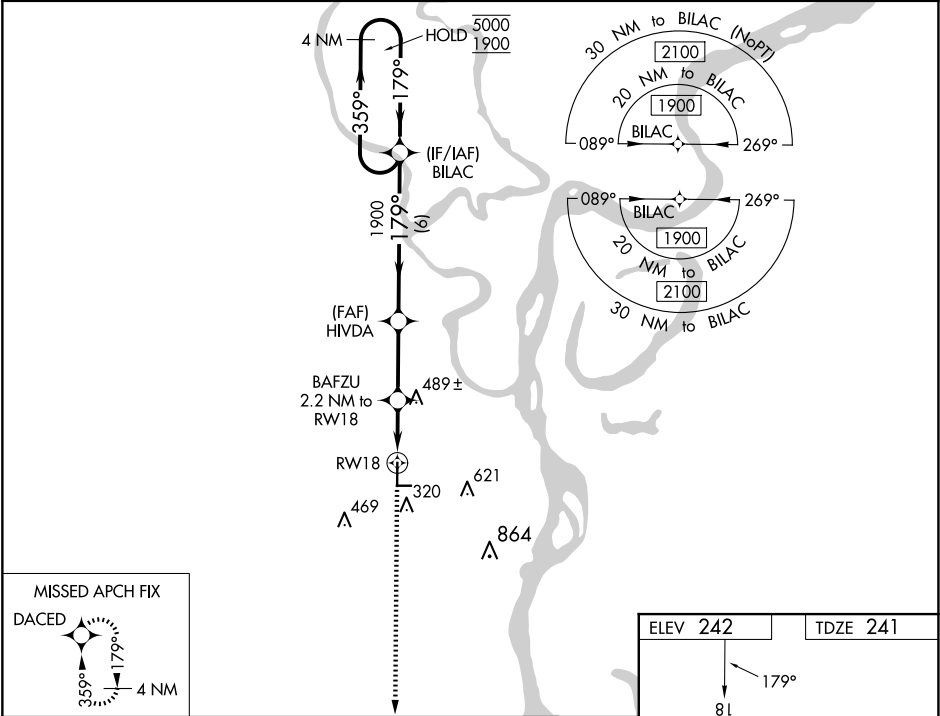
WAAS CH 86941 W18A	APP CRS 179°	Rwy Idg TDZE Apt Elev	5001 241 242
--	------------------------	-----------------------------	---

RNAV (GPS) RWY 18

THOMPSON-ROBBINS (HEE)

RNP APCH - GPS.	MISSED APPROACH: Climb to 1900 direct DACED and hold.
<div>Baro-VNAV NA. Use Tunica altimeter setting. Rwy 18 helicopter visibility reduction below ¾ SM NA. Circling Rwy 9, 27 NA at night.</div>	

UTA AWOS-3 118.075	MEMPHIS CENTER 135.3 335.8	UNICOM 122.8 (CTAF) 0
------------------------------	--------------------------------------	---------------------------------



1900	DACED	HIVDA	BILAC	4 NM Holding Pattern
1900	1900	1900	5000	1900
179°	179°	179°	359°	179°
1000	1000	1000	GP 3.00°	TCH 48
2.2 NM	2.8 NM	6 NM		
CATEGORY	A	B	C	D
LPV DA	542-1	301 (300-1)		
LNAV/VNAV DA	710-1⅜	469 (500-1⅜)		
LNAV MDA	740-1	499 (500-1)	740-1⅜	499 (500-1⅜)
CIRCLING	840-1	598 (600-1)	980-2 738 (800-2)	980-2¼ 738 (800-2¼)

