

WAAS CH 69503 W27A	APP CRS 274°	Rwy Idg 6122 TDZE 812 Apt Elev 812
--	------------------------	---

RNAV (GPS) RWY 27
ATHENS/BEN EPPS (AHN)

RNP APCH - GPS.

⚠ For uncompensated Baro-VNAV systems, LNAV/VNAV NA below -99°C or above 54°C.
When local altimeter setting not received, use Winder altimeter setting: increase LPV C/D to 1071 feet; increase LNAV/VNAV D/A to 1121 feet; increase all MDA 60 feet and increase LNAV C/D visibility to 1 mile and Circling Cat D visibility to 2 1/4 mile. For inop MALSF, increase LNAV/VNAV all Cats visibility to 1/2 mile, increase LNAV C/D visibility to 1 mile. For inop MALSF when using Winder altimeter setting increase LPV all Cats visibility to 1/2 mile, increase LNAV/VNAV all Cats visibility to 1 mile, increase LNAV C/D visibility to 1 1/2 mile. Baro-VNAV and VDP NA when using Winder altimeter setting. Inop table does not apply to LPV. Circling Rwy 2, 20 NA at night.

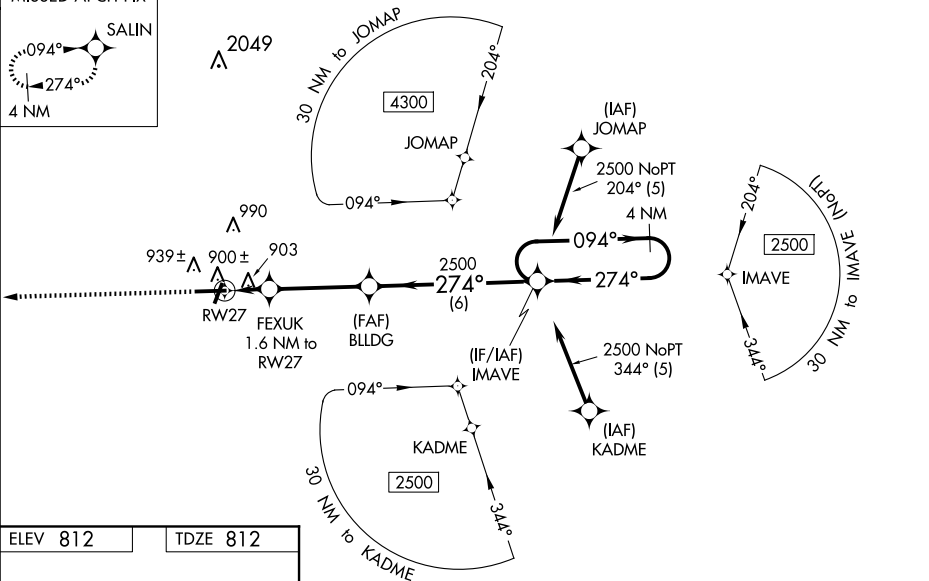
MALSF



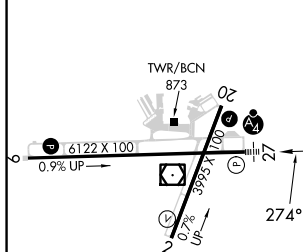
MISSED APPROACH:
Climb to 2500 direct
SALIN and hold.

ASOS	ATLANTA APP CON ★	ATHENS TOWER ★	GND CON	CLNC DEL	CLNC DEL	UNICOM
132.875	132.475 291.1	126.3 (CTAF) 0 338.275	121.8	121.8	132.475 291.1 (when twr closed)	122.95

MISSED APCH FIX



ELEV 812	TDZE 812
----------	----------

[illegible]