

APP CRS	Rwy Idg	6006
058°	TDZE	186
	Apt Elev	212

RNAV (RNP) Y RWY 6

TRENTON MERCER (TTN)

▼

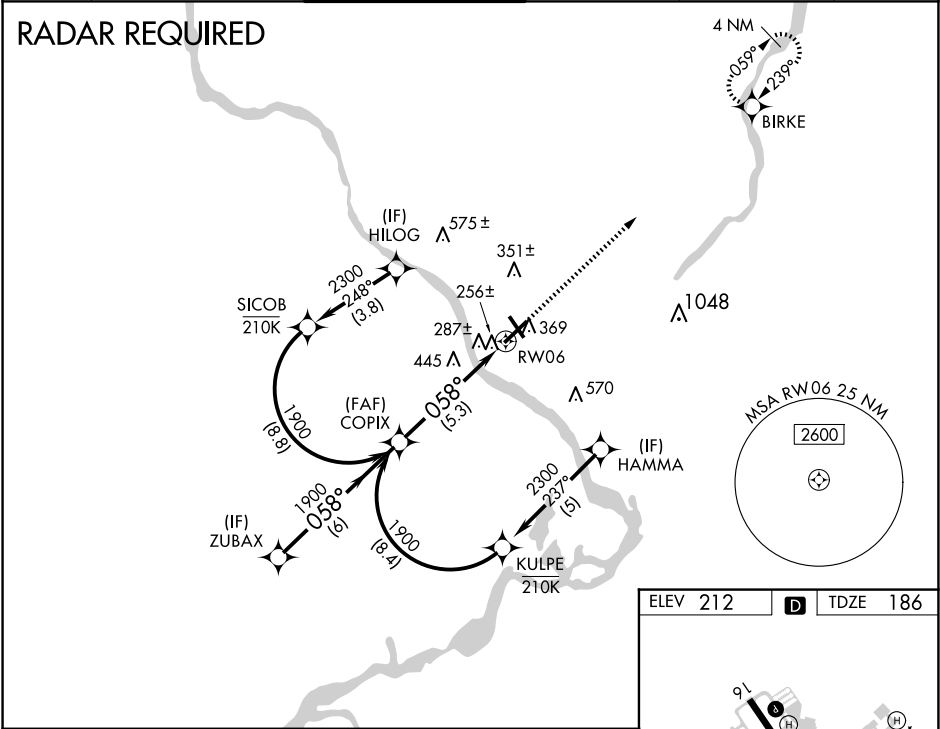
For uncompensated Baro-VNAV systems, procedure NA below -13°C (8°F) or above 54°C (130°F).  
GPS required.  
For inoperative MALSR, increase RNP 0.10 DA all Cats visibility to 1 mile, increase RNP 0.30 DA all Cats visibility to 1½ mile.

MALSR

AS

MISSED APPROACH:  
Climb to 2600 direct  
BIRKE and hold.

ATIS	PHILADELPHIA	APP CON	TRENTON TOWER ★	GND CON	CLNC DEL	UNICOM
126.775	123.8	291.7	120.7 (CTAF) 0 257.8	121.9 257.8	121.9 257.8	122.95



COPIX 1900

1900

GP 3.00°  
TCH 60

058°

5.3 NM

RW06

VGSI and RNAV glidepath not coincident.  
See planview for multiple IF locations.

2600

BIRKE

ELEV 212

D

TDZE 186

91

4300 X 150

TWR 276

8006 X 150

0.5% UP

0.3% UP

34

058°

CATEGORY	A	B	C	D
RNP 0.10 DA		510-½	324 (300-½)	
RNP 0.30 DA		668-1⅞	482 (500-1⅞)	

AUTHORIZATION REQUIRED

HIRL Rwy 6-24 and 16-34 0

REIL Rwy 16, 24 and 34 0

NE-2, 07 AUG 2025 to 04 SEP 2025

NE-2, 07 AUG 2025 to 04 SEP 2025