

APP CRS	Rwy Idg	6006
239°	TDZE	193
	Apt Elev	212

RNAV (RNP) Y RWY 24

TRENTON MERCER (TTN)

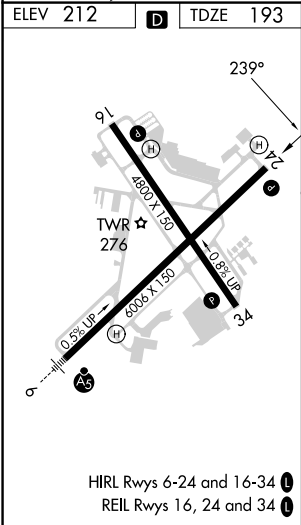
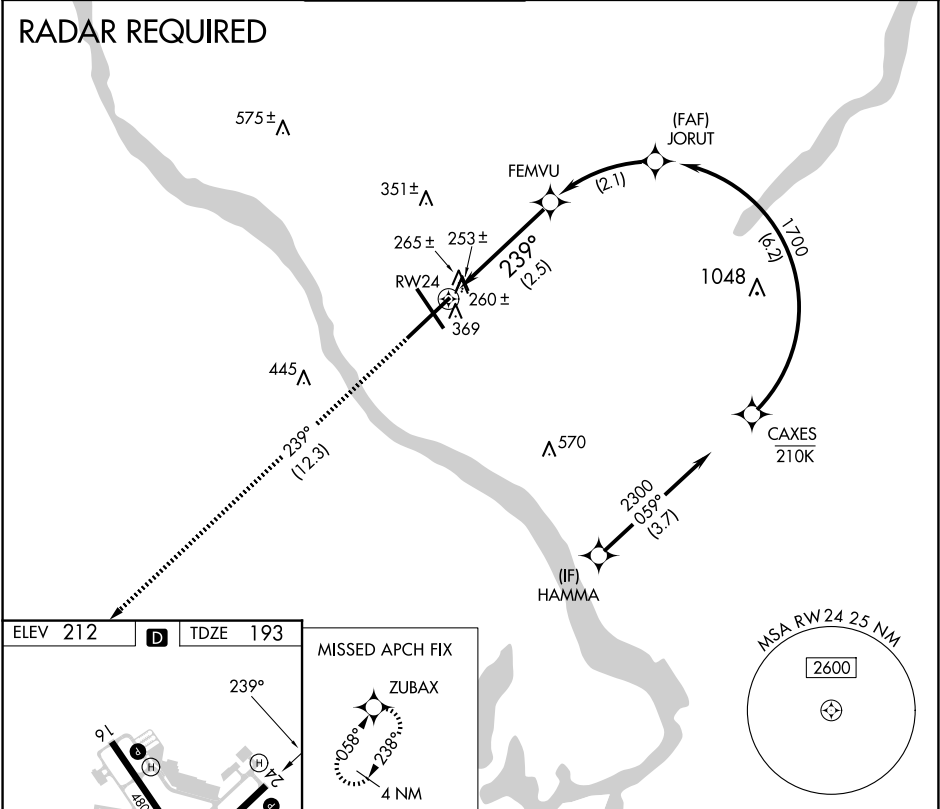
▼

For uncompensated Baro-VNAV systems, procedure NA below -13°C (8°F) or above 54°C (130°F).
When VGSI inop, procedure NA at night.
RF required.
GPS required.

MISSED APPROACH: Climb to 2700 on track 239° to ZUBAX and hold.

ATIS	PHILADELPHIA	APP CON	TRENTON TOWER ★	GND CON	CLNC DEL	UNICOM
126.775	123.8	291.7	120.7 (CTAF) 257.8	121.9 257.8	121.9 257.8	122.95

RADAR REQUIRED



MISSED APCH FIX

ZUBAX

059° 238° 4 NM

2700

↑

tr 239°

ZUBAX

VGSI and RNAV glidepath not coincident (VGSI Angle 3.00/TCH 42).

FEMVU

JORUT

CAXES

HAMMA

RW24

239°

1043

1700

1700

059°

2600

2300

GP 3.00° TCH 55

2.5 NM

2.1 NM

6.2 NM

3.7 NM

CATEGORY	A	B	C	D
RNP 0.10 DA		641-1½	448 (500-1½)	
RNP 0.30 DA		741-1½	548 (600-1½)	

AUTHORIZATION REQUIRED

NE-2, 07 AUG 2025 to 04 SEP 2025

NE-2, 07 AUG 2025 to 04 SEP 2025