

WAAS CH <b>99330</b> <b>W16A</b>	APP CRS <b>158°</b>	Rwy Idg TDZE Apt Elev	<b>4800</b> <b>213</b> <b>213</b>
--	------------------------	-----------------------------	---

RNAV (GPS) RWY 16

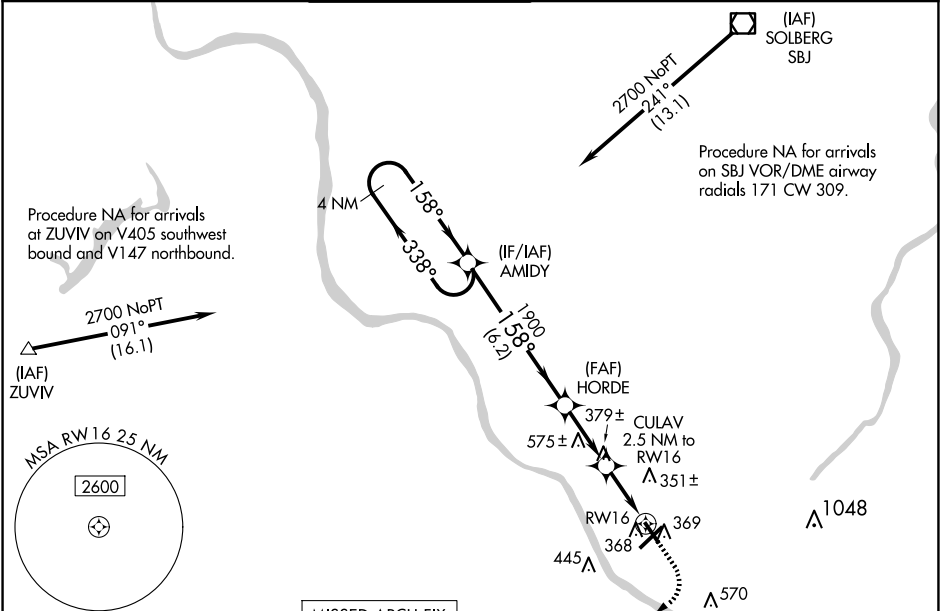
TRENTON MERCER (TTN)

▼ Night Landing: Rwy 34 operational VGSi required, remain on or above VGSi glidepath until threshold. Baro-VNAV NA when using Northeast Philadelphia altimeter setting. For uncompensated Baro-VNAV systems, LNAV/VNAV NA below -15°C (5°F) or above 54°C (130°F). DME/DME RNP-0.3 NA.

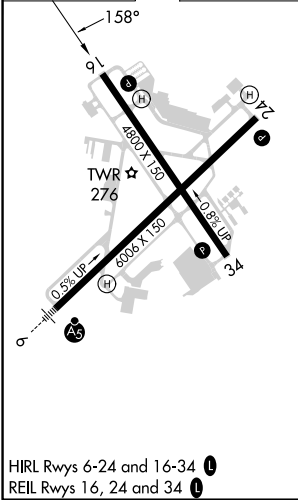
▲ Helicopter visibility reduction below ¾ SM NA. When local altimeter setting not received use Northeast Philadelphia altimeter setting; increase LPV DA to 510 feet and all Cats visibility ¾ SM, LNAV/VNAV DA to 576 feet; increase all MDA 60 feet and LNAV Cat C/D visibility ¾ SM and Circling Cat C visibility ½ SM.

MISSED APPROACH:  
Climb to 1500 then  
climbing right turn to  
2700 direct ZUBAX  
and hold.

ATIS <b>126.775</b>	PHILADELPHIA APP CON <b>123.8 291.7</b>	TRENTON TOWER ★ <b>120.7 (CTAF) 0 257.8</b>	GND CON <b>121.9 257.8</b>	CLNC DEL <b>121.9 257.8</b>	UNICOM <b>122.95</b>
------------------------	--	--	-------------------------------	--------------------------------	-------------------------



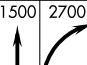

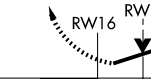
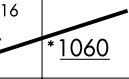
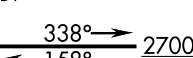
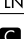
ELEV <b>213</b>	<b>D</b>	TDZE <b>213</b>
-----------------	----------	-----------------



MISSED APCH FIX

ZUBAX

058° 238° 4 NM

1500 2700 ZUBAX		VGSi and RNAV glidepath not coincident (VGSi Angle 3.00/TCH 40).		4 NM Holding Pattern	
					
* LNAV only.		CULAV 2.5 NM to RW16		AMIDY	
					
		* 1060		1900	
		1.2 1.3 2.6 NM 6.2 NM			
CATEGORY	A		B	C	D
LPV DA	463-¾ 250 (300-¾)				
LNAV/ VNAV DA	529-1 316 (400-1)				
LNAV MDA	640-1 427 (500-1)		640-1¼ 427 (500-1¼)		
 CIRCLING	680-1 467 (500-1)		760-1½ 547 (600-1½)		960-2½ 747 (800-2½)

NE-2, 07 AUG 2025 to 04 SEP 2025

NE-2, 07 AUG 2025 to 04 SEP 2025