
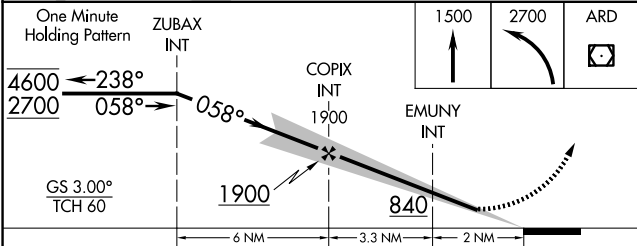
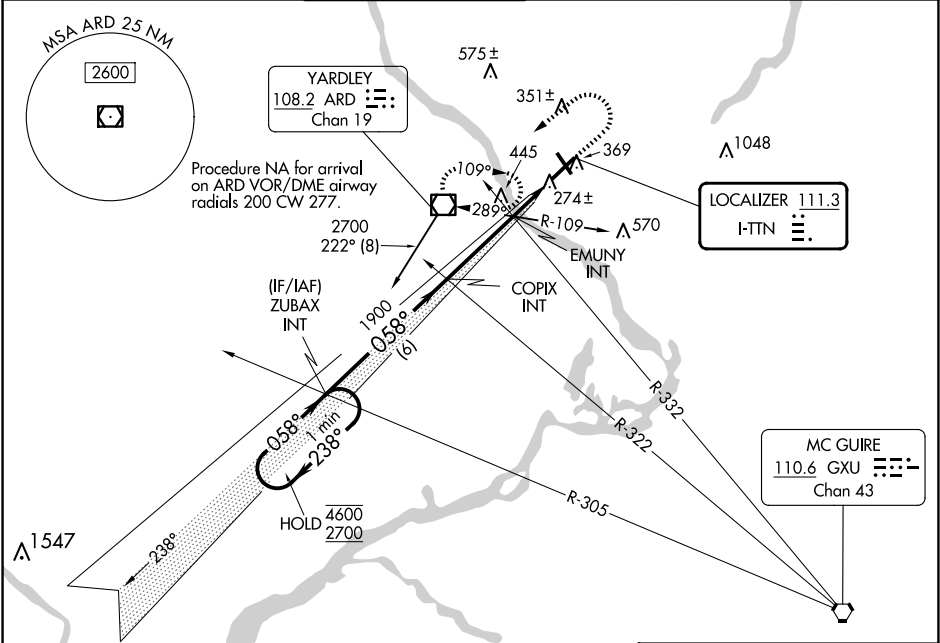


LOC I-TTN 111.3	APP CRS 058°	Rwy Idg TDZE 186 Apt Elev 213
---------------------------	------------------------	---

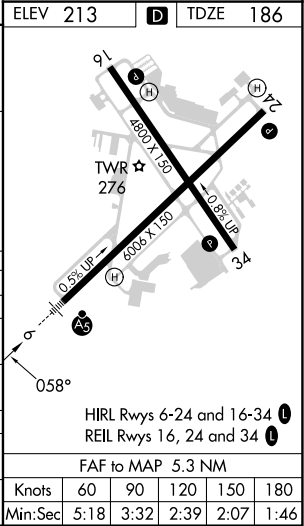
ILS or LOC RWY 6
TRENTON MERCER (TTN)

<p>▼ When Circling to Rwy 34 at night, operational VGSI required, remain on or above VGSI glidepath until threshold. For inop ALS, increase EMUNY fix minimums S-LOC 6 Cat C/D visibility to 1 SM.</p> <p>▲</p>	<p>MALSR</p> 	<p>MISSED APPROACH: Climb to 1500 then climbing left turn to 2700 direct ARD VOR/DME and hold.</p>
---	--	--

ATIS 126.775	PHILADELPHIA APP CON 123.8 291.7	TRENTON TOWER ★ 120.7 (CTAF) 0 257.8	GND CON 121.9 257.8	CLNC DEL 121.9 257.8	UNICOM 122.95
------------------------	--	--	-------------------------------	--------------------------------	-------------------------



CATEGORY	A	B	C	D
S-ILS 6	414-½ 228 (300-½)			
S-LOC 6	840-½ 654 (700-½)		840-1⅜ 654 (700-1⅜)	
CIRCLING	840-1 627 (700-1)		840-1⅞ 627 (700-1⅞)	960-2½ 747 (800-2½)
EMUNY FIX MINIMUMS (DUAL VOR RECEIVERS REQUIRED)				
S-LOC 6	540-½ 354 (400-½)		540-⅝ 354 (400-⅝)	
CIRCLING	680-1 467 (500-1)		760-1½ 547 (600-1½)	960-2½ 747 (800-2½)



NE-2, 07 AUG 2025 to 04 SEP 2025

NE-2, 07 AUG 2025 to 04 SEP 2025