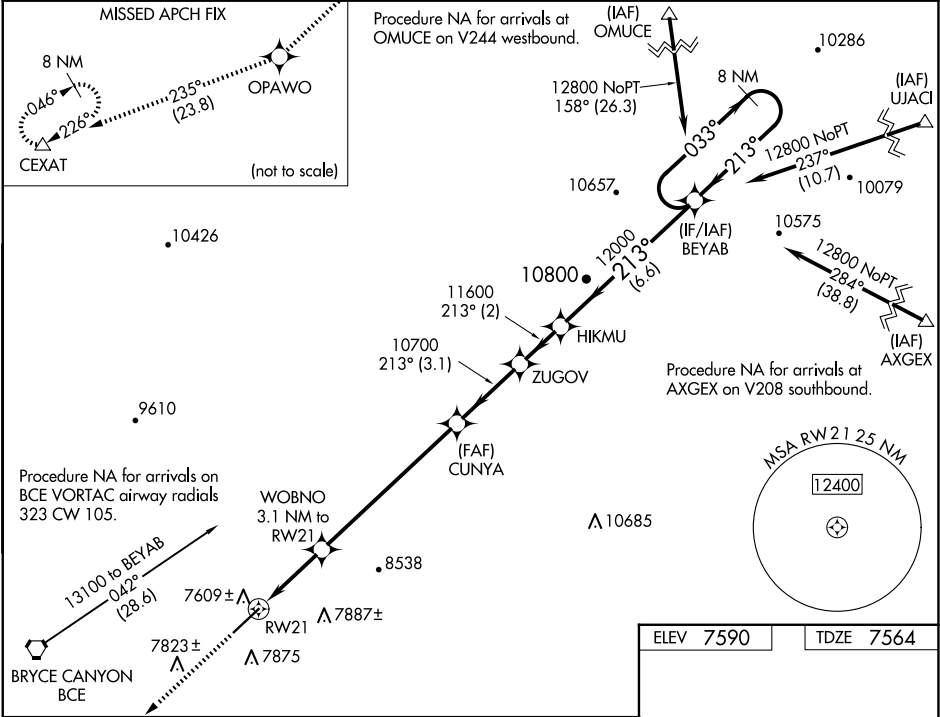


WAAS CH <b>99516</b> <b>W21A</b>	APP CRS <b>213°</b>	Rwy Idg TDZE <b>7395</b> <b>7564</b> Apt Elev <b>7590</b>
--	------------------------	--

RNAV (GPS) RWY 21  
BRYCE CANYON (BCE)

RNP APCH. ▼ For uncompensated Baro-VNAV systems, LNAV/VNAV NA below -30°C or above 54°C. When local altimeter setting not received, procedure NA. Rwy 21 helicopter visibility reduction below ¾ SM NA.	MISSED APPROACH: Climb to 12300 direct OPAWO and on track 235° to CEXAT and hold.
--	---

ASOS <b>135.475</b>	SALT LAKE CITY CENTER <b>133.6 269.25</b>	UNICOM <b>122.8 (CTAF) 0</b>
------------------------	--	---------------------------------



12300 ↑	OPAWO ✧	tr 235°	CEXAT △	VGSI and RNAV glidepath not coincident (VGSI Angle 3.00/TCH 43).				8 NM Holding Pattern
				ZUGOV	HIKMU	BEYAB		
*LNAV only				WOBNO 3.1 NM to RW21	CUNYA	033° → 12800 ← 213°		
*1.5 NM to RW21				10700	11600	12000	GP 3.00° TCH 40	
RW21				8580*	10700			
1.5 1.6				6.7 NM	3.1 NM	2 NM	6.6 NM	
CATEGORY	A			B		C		D
LPV DA	7889-1 1/8			325 (300-1 1/8)				NA
LNAV/ VNAV	DA			8016-1 1/2		452 (500-1 1/2)		NA
LNAV MDA	8040-1			476 (500-1)		8040-1 3/8 476 (500-1 3/8)		NA

