

WAAS CH <b>62820</b> <b>W05A</b>	APP CRS <b>049°</b>	Rwy Ldg TDZE <b>47</b> Apt Elev <b>53</b>
--	------------------------	---

RNAV (GPS) RWY 5

SALISBURY-OCEAN CITY WICOMICO RGNL (SBY)

RNP APCH - GPS.

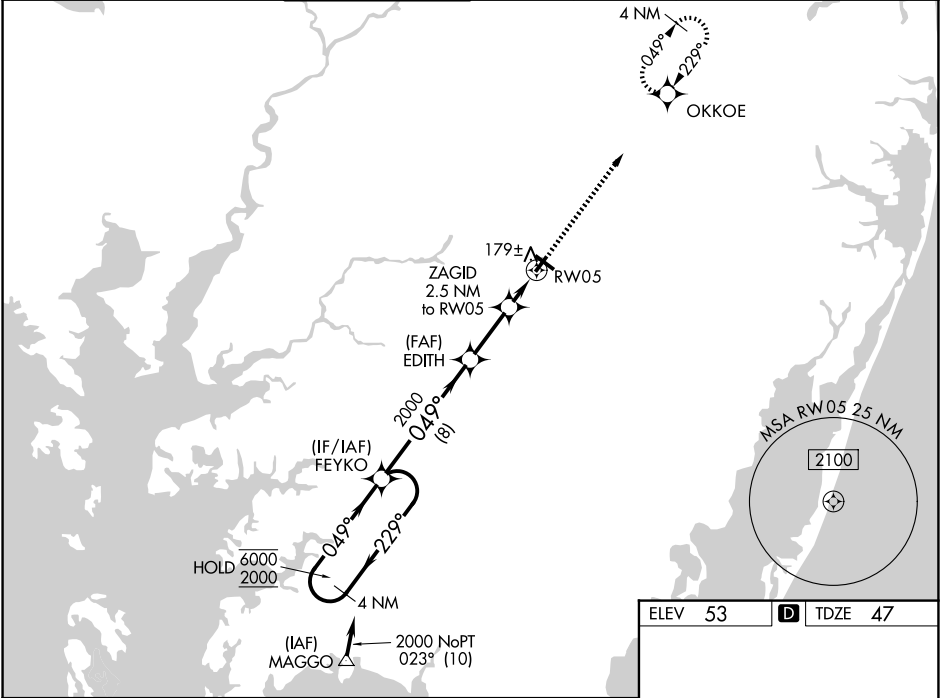
▼

▲

For uncompensated Baro-VNAV systems, LNAV/VNAV NA below -9°C or above 54°C. Rwy 5 helicopter visibility reduction below ¾ SM NA.

MISSED APPROACH: Climb to 2000 direct OKKOE and hold.

ASOS <b>118.325</b>	PATUXENT APP CON★ <b>127.95 314.0</b>	SALISBURY TOWER★ <b>119.425</b> (CTAF) <b>0</b>	GND CON <b>123.775</b>	CLNC DEL <b>123.775</b>	CLNC DEL <b>132.45</b> (When twr closed)	UNICOM <b>122.95</b>
------------------------	--	--	---------------------------	----------------------------	--	-------------------------



4 NM Holding Pattern		FEYKO	EDITH	2000	2000	OKKOE
6000 ← 229°						
2000 → 049°						
GP 3.00°						
TCH 45						
8 NM		3.5 NM	1.4 NM	1.1 NM		
CATEGORY	A	B	C	D		
LPV DA	345-7/8		298 (300-7/8)			
LNAV/VNAV DA	460-1 1/8		413 (500-1 1/8)			
LNAV MDA	440-1	393 (400-1)	440-1 1/8	393 (400-1 1/8)		
CIRCLING	480-1 427 (500-1)	520-1 467 (500-1)	560-1 1/2 507 (600-1 1/2)	700-2 647 (700-2)		

ELEV 53 D TDZE 47

REIL Rwy 5, 14 and 23 **0**  
MIRL Rwy 5-23 **0**  
HIRL Rwy 14-32 **0**

NE-3, 07 AUG 2025 to 04 SEP 2025

NE-3, 07 AUG 2025 to 04 SEP 2025