

WAAS CH 48912 W32A	APP CRS 319°	Rwy Ldg 6400 TDZE 53 Apt Elev 53
--	------------------------	---

RNAV (GPS) RWY 32

SALISBURY-OCEAN CITY WICOMICÓ RGNL (SBY)

RNP APCH.

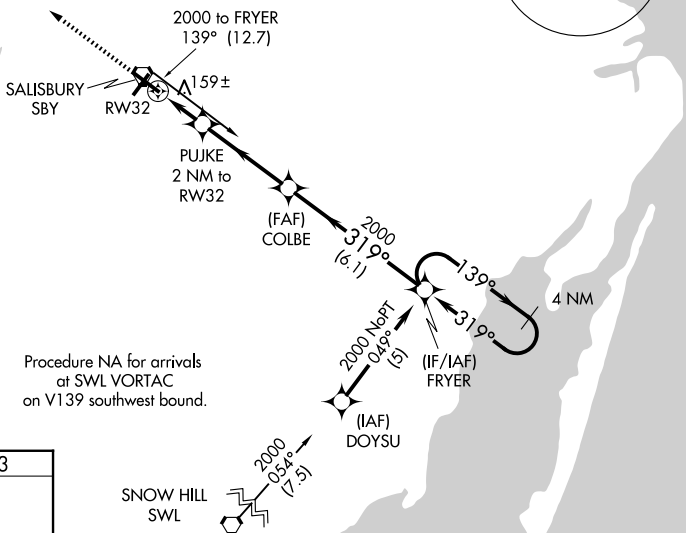
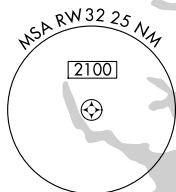
V For uncompensated Baro-VNAV systems, LNAV/VNAV NA below -15°C or above 49°C. When local altimeter setting not received use Georgetown altimeter setting: increase LPV DA to 305 feet; increase LNAV/VNAV DA to 510; increase all MDA 60 feet and LNAV Cat C and Circling Cat D visibility ¼ SM. For inoperative MALSR, increase LNAV Cat D visibility to 1¼ SM. VDP and Baro-VNAV NA when using Georgetown altimeter setting.

MAISD

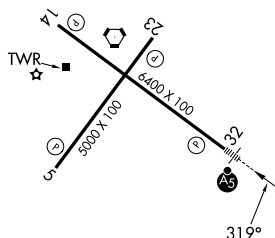


MISSED APPROACH:
Climb to 2100 direct
HYDRS and hold.

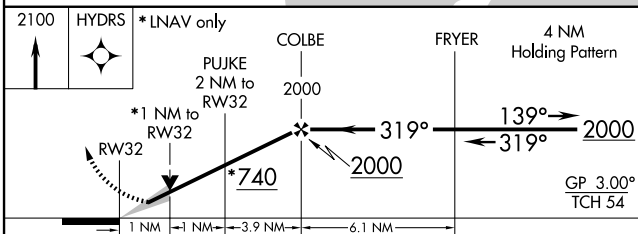
ASOS 118.325	PATUXENT APP CON ★ 127.95 314.0	SALISBURY TOWER ★ 119.425 (CTAF) 0	GND CON 123.775	CLNC DEL 123.775	CLNC DEL 132.45 (When twr closed)	UNICOM 122.95
-----------------	------------------------------------	---------------------------------------	--------------------	---------------------	---	------------------



ELEV	53	D	TDZE	53
------	----	----------	------	----



REIL Rwys 5, 14 and 23 **L**
MIRL Rwy 5-23 **L**
HIRL Rwy 14-32 **L**



CATEGORY	A	B	C	D
LPV DA	253-½ 200 (200-½)			
LNAV/ VNAV DA	458-1 405 (500-1)			
LNAV MDA	420-½ 367 (400-½)			420-1 367 (400-1)
CIRCLING	480-1 427 (500-1)	520-1 467 (500-1)	560-1½ 507 (600-1½)	700-2 647 (700-2)