

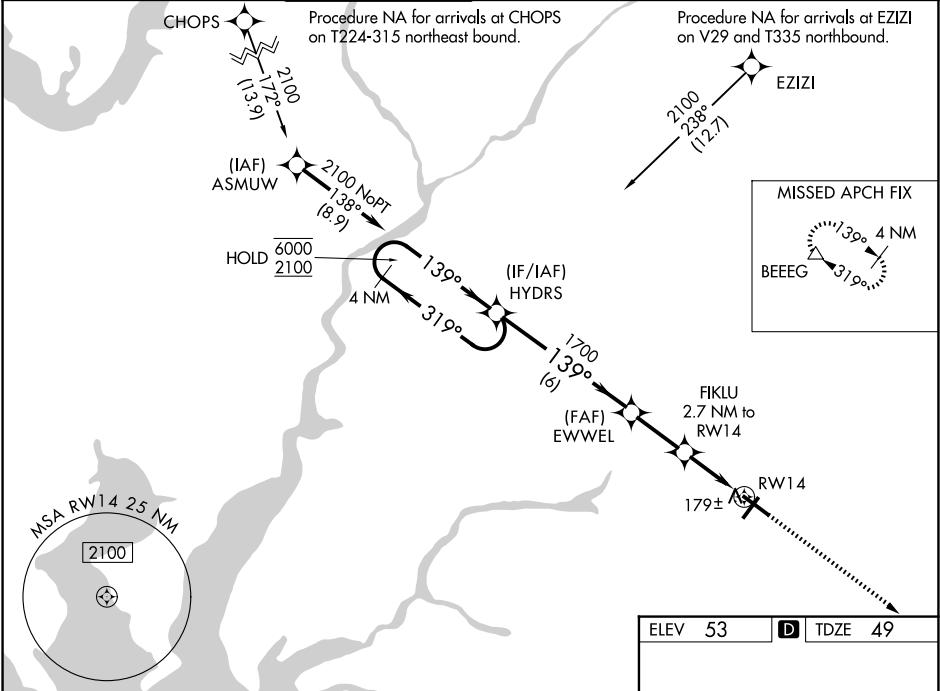
WAAS CH <b>56320</b> <b>W14A</b>	APP CRS <b>139°</b>	Rwy Ldg TDZE Apt Elev <b>6400</b> <b>49</b> <b>53</b>
--	------------------------	--

RNAV (GPS) RWY 14

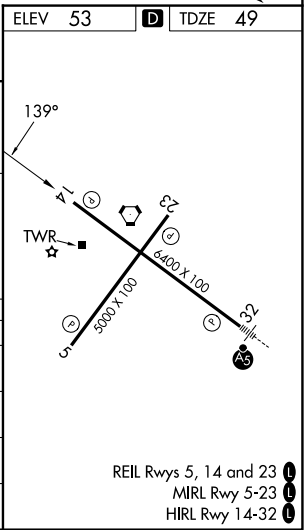
SALISBURY-OCEAN CITY WICOMICO RGNL (SBY)

RNP APCH - GPS.		MISSED APPROACH: Climb to 2000 direct BEEEG and hold.
<b>T</b> <b>A</b>	Rwy 14 helicopter visibility reduction below ¾ SM NA. For uncompensated Baro-VNAV systems, LNAV/VNAV NA below -9° C or above 54° C.	

ASOS <b>118.325</b>	PATUXENT APP CON ★ <b>127.95 314.0</b>	SALISBURY TOWER ★ <b>119.425</b> (CTAF) <b>0</b>	GND CON <b>123.775</b>	CLNC DEL <b>123.775</b>	CLNC DEL <b>132.45</b> (When twr closed)	UNICOM <b>122.95</b>
------------------------	---	---	---------------------------	----------------------------	--	-------------------------



4 NM Holding Pattern		HYDRS	EWWEL	FIKLU 2.7 NM to RW14	2000 BEEEG
6000 ← 319°		2100 → 139°	1700	1.1 NM to RW14	△
GP 3.00° TCH 45		1700	940	RW14	
		6 NM	2.4 NM	1.6 NM	1.1 NM
CATEGORY	A	B	C	D	
LPV DA	299-¾		250 (300-¾)		
LNAV/VNAV DA	436-1½		387 (400-1½)		
LNAV MDA	440-1 391 (400-1)		440-1½ 391 (400-1½)		
CIRCLING	480-1 427 (500-1)	520-1 467 (500-1)	560-1½ 507 (600-1½)	700-2 647 (700-2)	



NE-3, 07 AUG 2025 to 04 SEP 2025

NE-3, 07 AUG 2025 to 04 SEP 2025