
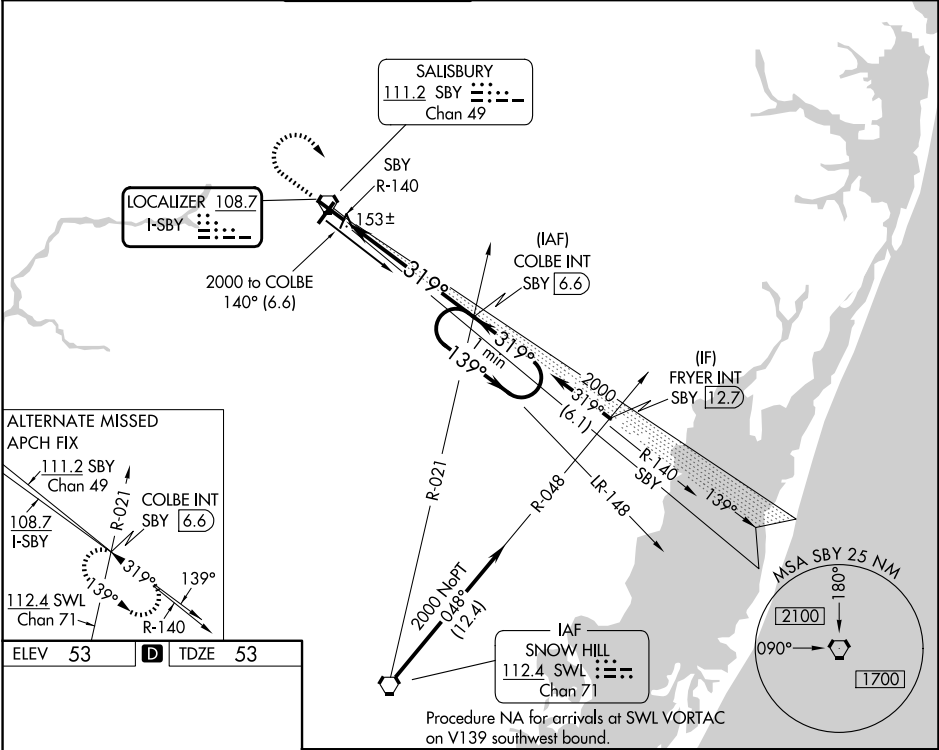


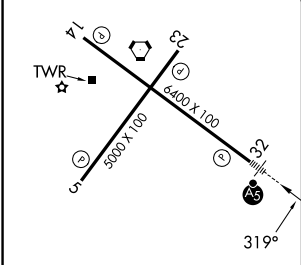
LOC I-SBY 108.7	APP CRS 319°	Rwy Ldg TDZE Apt Elev 6400 53 53
---------------------------	------------------------	--

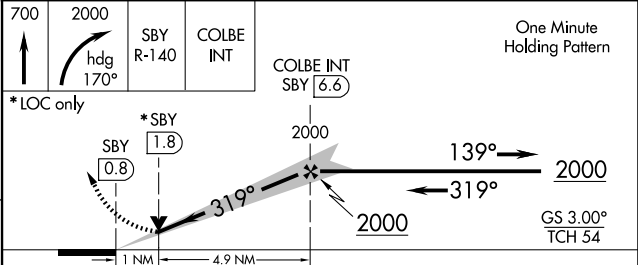
ILS or LOC RWY 32
SALISBURY-OCEAN CITY WICOMICO RGNL (SBY)

⚠ When local altimeter setting not received, use Georgetown altimeter setting: increase DA to 305 feet; increase all MDA 60 feet and S-LOC 32 Cat C and Circling Cat D visibility ¼ SM.	MALSR 	MISSED APPROACH: Climb to 700 then climbing right turn to 2000 on heading 170° and on SBY VORTAC R-140 to COLBE INT/SBY VORTAC 6.6 DME and hold.
---	--	--

ASOS 118.325	PATUXENT APP CON★ 127.95 314.0	SALISBURY TOWER★ 119.425 (CTAF) 0	GND CON 123.775	CLNC DEL 123.775	CLNC DEL 132.45 (When twr closed)	UNICOM 122.95
------------------------	--	--	---------------------------	----------------------------	--	-------------------------



ELEV 53	D	TDZE 53
		
REIL Rwy 5, 14 and 23 0		
MIRL Rwy 5-23 0		
HIRL Rwy 14-32 0		
FAF to MAP 5.9 NM		
Knots	60	90 120 150 180
Min:Sec	5:54	3:56 2:57 2:22 1:58

700	2000	SBY R-140	COLBE INT	COLBE INT SBY [6.6]	One Minute Holding Pattern
					
*LOC only					
*SBY [1.8]					
SBY [0.8]					
1 NM 4.9 NM					
GS 3.00° TCH 54					
CATEGORY	A	B	C	D	
S-ILS 32	253-½ 200 (200-½)				
S-LOC 32	420-½ 367 (400-½)				
CIRCLING	480-1 427 (500-1)	520-1 467 (500-1)	560-1½ 507 (600-1½)	420-¾ 367 (400-¾) 700-2 647 (700-2)	