

WAAS CH <b>82615</b> <b>W30A</b>	APP CRS <b>305°</b>	Rwy Ldg TDZE Apt Elev	<b>5301</b> <b>1142</b> <b>1156</b>
--	------------------------	-----------------------------	---

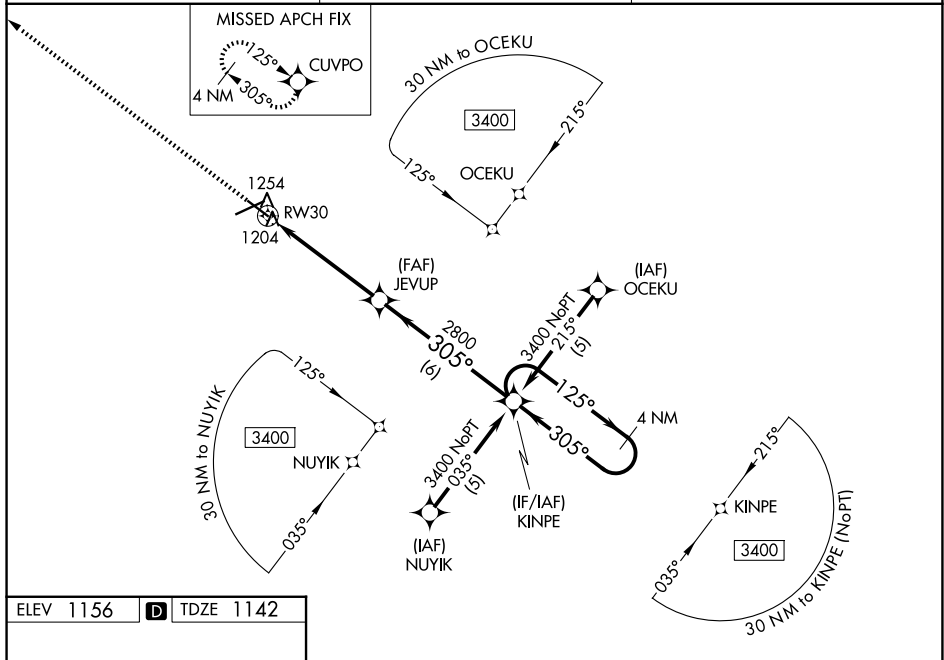
# RNAV (GPS) RWY 30

RNP APCH.

**▼** For uncompensated Baro-VNAV systems, LNAV/VNAV NA below -17°C or above 54°C.  
**▲** Helicopter visibility reduction below  $\frac{3}{4}$  SM NA. VDP and Baro-VNAV NA when using Webster City altimeter setting. When local altimeter setting not received, use Webster City altimeter setting: increase LPV DA to 1466 feet and all Cats visibility  $\frac{1}{4}$  SM; increase LNAV/VNAV DA to 1516 feet; increase all MDA 60 feet and LNAV Cats C/D and Circling Cat C visibility  $\frac{1}{4}$  SM.

**MISSED APPROACH:** Climb to 3400 direct CUVPO and hold.

AWOS-3PT <b>118.775</b>	MINNEAPOLIS CENTER <b>134.0 288.3</b>	UNICOM <b>123.0 (CTAF) ①</b>
----------------------------	--	---------------------------------



ELEV 1156	<b>D</b>	TDZE 1142
-----------	----------	-----------

