

WAAS CH 45815 W24A	APP CRS 243°	Rwy Ldg 6547 TDZE 1156 Apt Elev 1156
----------------------------------------	------------------------	-----------------------------------------------------------------

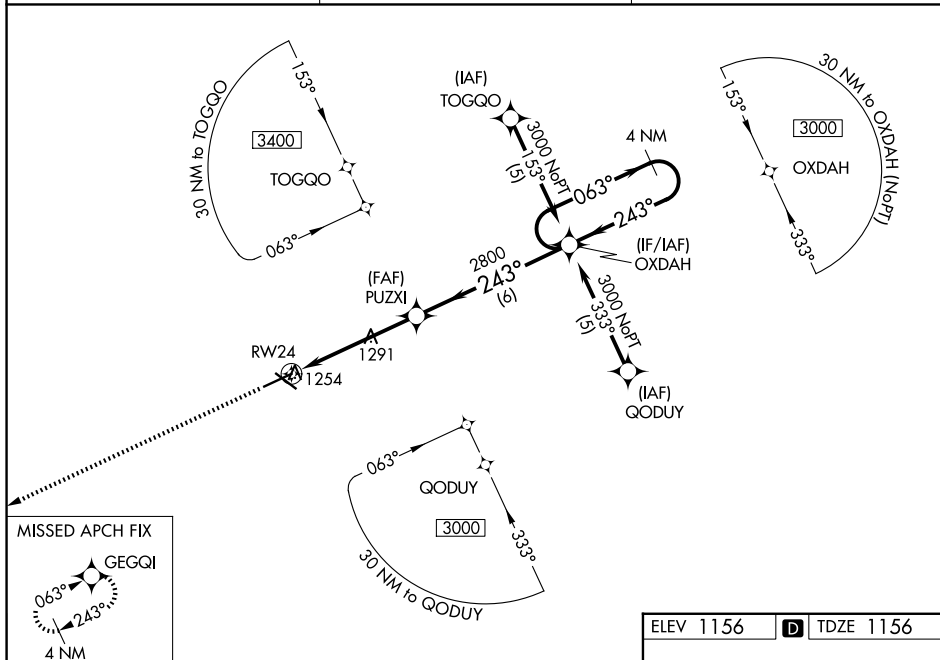
RNAV (GPS) RWY 24
FORT DODGE RGNL (FOD)

RNP APCH.

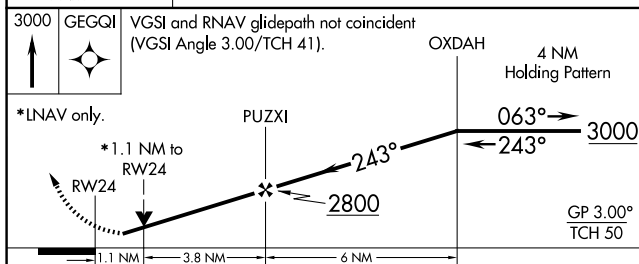
T Baro-VNAV and VDF NA when using Webster City altimeter setting. For uncompensated Baro-VNAV systems, LNAV/VNAV NA below -17°C or above 54°C. When local altimeter setting not received, use Webster City altimeter setting: increase LPV DA to 1448 feet; increase LNAV/VNAV DA to 1546 feet; increase all MDAs 60 feet and LNAV Cat C/D and Circling Cat C visibility ½ mile.

MISSED APPROACH:
Climb to 3000 direct
GEGQI and hold.

AWOS-3PT 118.775	MINNEAPOLIS CENTER 134.0 288.3	UNICOM 123.0 (CTAF) 0
----------------------------	------------------------------------------	---------------------------------



ELEV 1156	D	TDZE 1156
-----------	----------	-----------



CATEGORY	A	B	C	D
LPV DA	1406-1 250 (300-1)			
RNAV/DA	1504-1¼ 348 (400-1¼)			
RNAV MDA	1560-1 404 (500-1)	1560-1⅛ 404 (500-1⅛)	1560-1¼ 404 (500-1¼)	
CIRCLING	1560-1 404 (500-1)	1620-1 464 (500-1)	1740-1½ 584 (600-1½)	2080-3 924 (1000-3)

