

VOR/DME OFK	APP CRS	Rwy Ldg	5160
114.35	125°	TDZE	1543
Chan 90(Y)		Apt Elev	1573

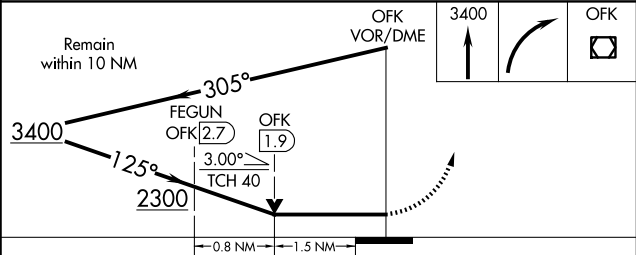
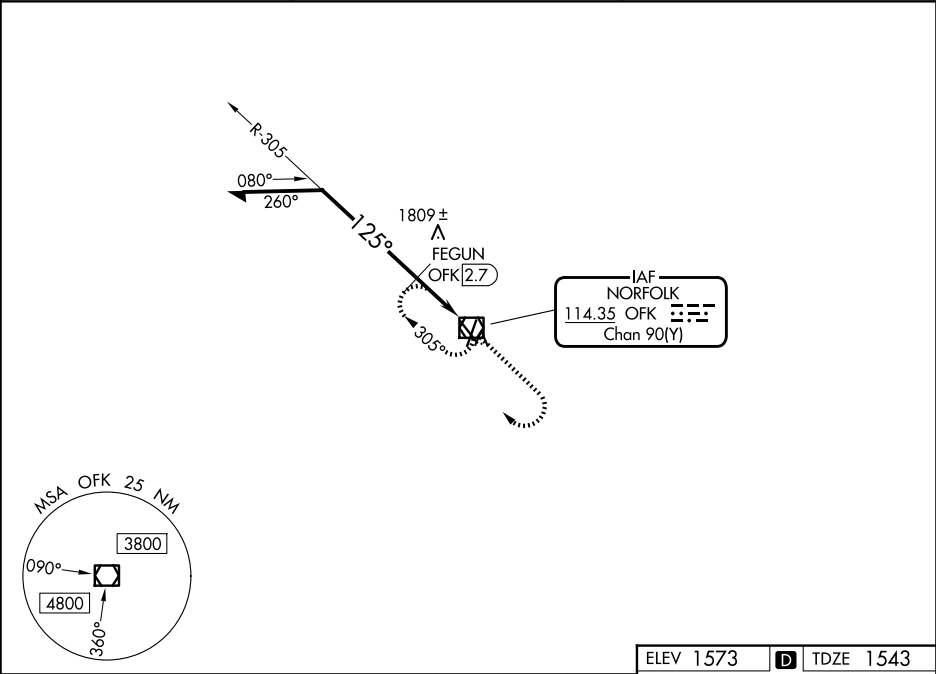
VOR RWY 14

NORFOLK RGNL/KARL STEFAN MEML FLD (OFK)

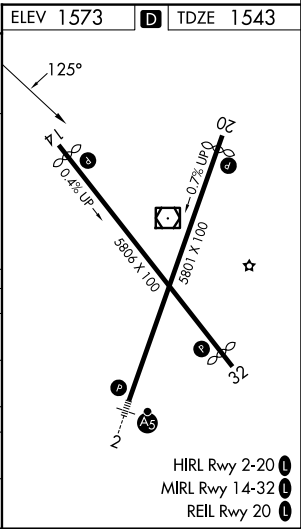
Rwy 14 helicopter visibility reduction below ¾ SM NA.

MISSED APPROACH: Climb to 3400 then right turn direct OFK VOR/DME and hold.

ASOS 119.025	MINNEAPOLIS CENTER 125.025 235.625	UNICOM 122.7 (CTAF) 0
-----------------	---------------------------------------	--------------------------



CATEGORY	A	B	C	D
S-14	2300-1 757 (800-1)	2300-1¼ 757 (800-1¼)	2300-2	757 (800-2)
CIRCLING	2300-1 727 (800-1)	2300-1¼ 727 (800-1¼)	2300-2 727 (800-2)	2360-2½ 787 (800-2½)
FEGUN FIX MINIMUMS (DME REQUIRED)				
S-14	2060-1	517 (500-1)	2060-1⅓	517 (500-1⅓)
CIRCLING	2060-1 487 (500-1)	2100-1 527 (600-1)	2260-2 687 (700-2)	2360-2½ 787 (800-2½)



VOR RWY 14

NC-2, 07 AUG 2025 to 04 SEP 2025

NC-2, 07 AUG 2025 to 04 SEP 2025