

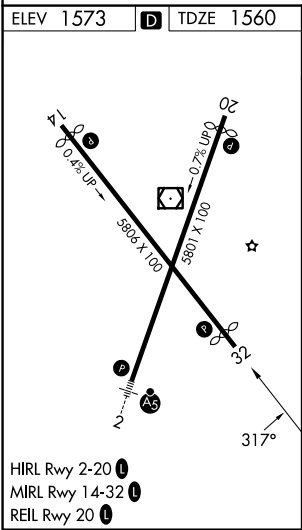
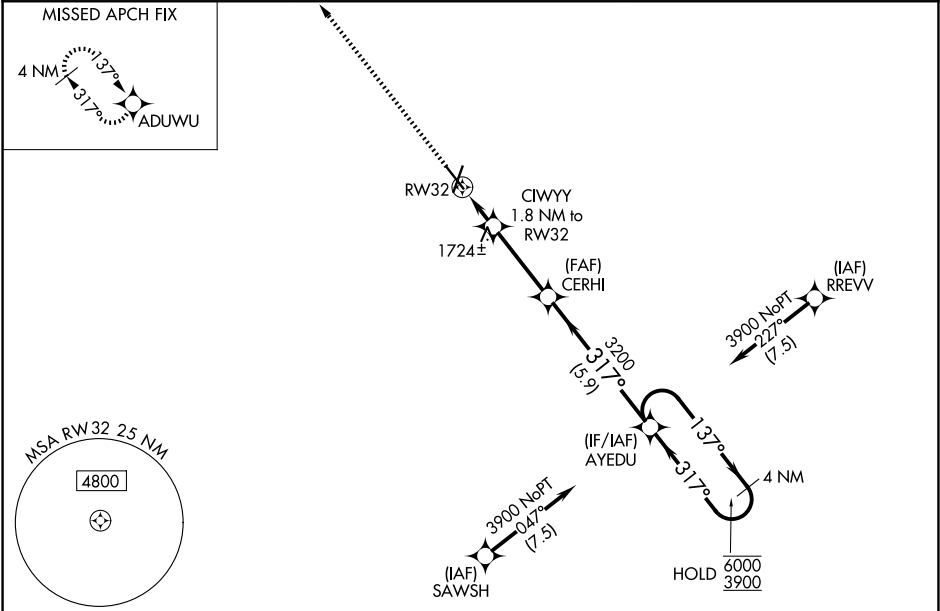
|  |                        |   |
|--|------------------------|---|
| WAAS<br>CH <b>86415</b><br><b>W32A</b> | APP CRS<br><b>317°</b> | Rwy Ldg<br>TDZE<br><b>1560</b><br>Apt Elev<br><b>1573</b> |
|--|------------------------|---|

RNAV (GPS) RWY 32

NORFOLK RGNL/KARL STEFAN MEML FLD (OFK)

|  |   |
|--|---|
| RNP APCH.  | MISSED APPROACH: Climb to 3900 direct ADUWU and hold. |
| <div><div>▼</div><div>Rwy 32 helicopter visibility reduction below ¾ SM NA.</div><div>▲</div><div>For uncompensated Baro-VNAV systems, LNAV/VNAV NA below -22°C or above 54°C.</div></div> |   |

|                        |  |                                 |
|------------------------|--|---------------------------------|
| ASOS<br><b>119.025</b> | MINNEAPOLIS CENTER<br><b>125.025 235.625</b> | UNICOM<br><b>122.7 (CTAF) 0</b> |
|------------------------|--|---------------------------------|



|              |                       |  |                       |                            |
|--------------|-----------------------|--|-----------------------|----------------------------|
| 3900         | ADUWU                 | VGSI and RNAV glidepath not coincident (VGSI Angle 3.50/TCH 49). |                       | 4 NM Holding Pattern       |
| *LNAV only   | CIWYY 1.8 NM to RW32  | CERHI 3200   | AYEDU                 | 137° → 6000<br>← 317° 3900 |
|              | *1 NM to RW32         | 2180*  | 3200                  | GP 3.00°<br>TCH 49         |
|              | 1 NM                  | 0.8  | 3.2 NM                | 5.9 NM                     |
| CATEGORY     | A                     | B  | C                     | D                          |
| LPV DA       | 1858-1 298 (300-1)    |  |                       |                            |
| LNAV/VNAV DA | 2019-1⅜ 459 (500-1⅜)  |  |                       |                            |
| LNAV MDA     | 1980-1                | 420 (500-1)  | 1980-1⅛               | 420 (500-1⅛)               |
| CIRCLING     | 2060-1<br>487 (500-1) | 2100-1<br>527 (600-1)  | 2260-2<br>687 (700-2) | 2360-2½<br>787 (800-2½)    |