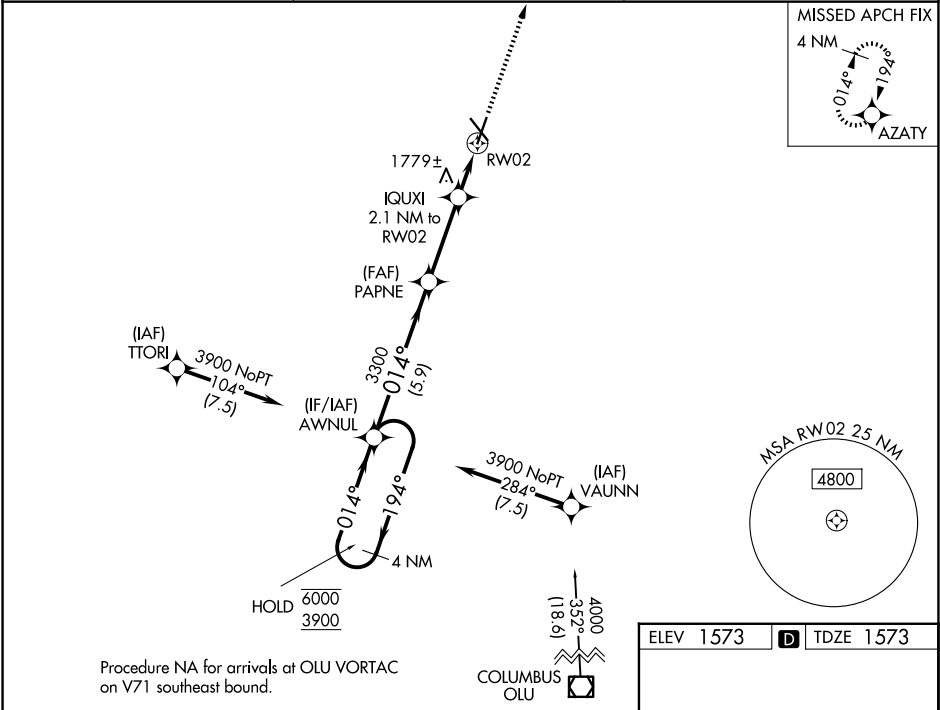


WAAS CH <b>50120</b> <b>W02A</b>	APP CRS <b>014°</b>	Rwy Ldg TDZE <b>1573</b> Apt Elev <b>1573</b>
----------------------------------------	------------------------	-----------------------------------------------------

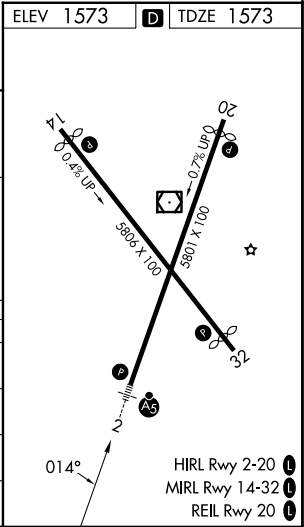
RNAV (GPS) RWY 2

NORFOLK RGNL/KARL STEFAN MEML FLD (OFK)

RNP APCH. <div><div></div><div>For uncompensated Baro-VNAV systems, LNAV/VNAV NA below -21°C or above 54°C.</div></div>		MALSR <div><div></div><div>A5</div></div>	MISSED APPROACH: Climb to 3900 direct AZATY and hold.
ASOS <b>119.025</b>	MINNEAPOLIS CENTER <b>125.025 235.625</b>	UNICOM <b>122.7 (CTAF) 0</b>	



4 NM Holding Pattern		AWNUL				3900	AZATY
6000 3900		← 194°		014° →			
GP 3.00° TCH 49		3300		*2280		*1.3 NM to RW02	
		5.9 NM		3.2 NM		0.8 NM	
						1.3 NM	
CATEGORY		A	B	C	D		
LPV DA		1773-½		200 (200-½)			
LNAV/VNAV DA		2038-1		465 (500-1)			
LNAV MDA		2040-½	467 (500-½)	2040-1	467 (500-1)		
CIRCLING		2060-1 487 (500-1)	2100-1 527 (600-1)	2260-2 687 (700-2)	2360-2½ 787 (800-2½)		



NC-2, 07 AUG 2025 to 04 SEP 2025

NC-2, 07 AUG 2025 to 04 SEP 2025