

WAAS

CH **60916**

W29A

APP CRS

286°

Rwy Ldg

7504

TDZE

122

Apt Elev

151

RNAV (GPS) RWY 29

GAINESVILLE RGNL (GNV)

RNP APCH - GPS.

▼

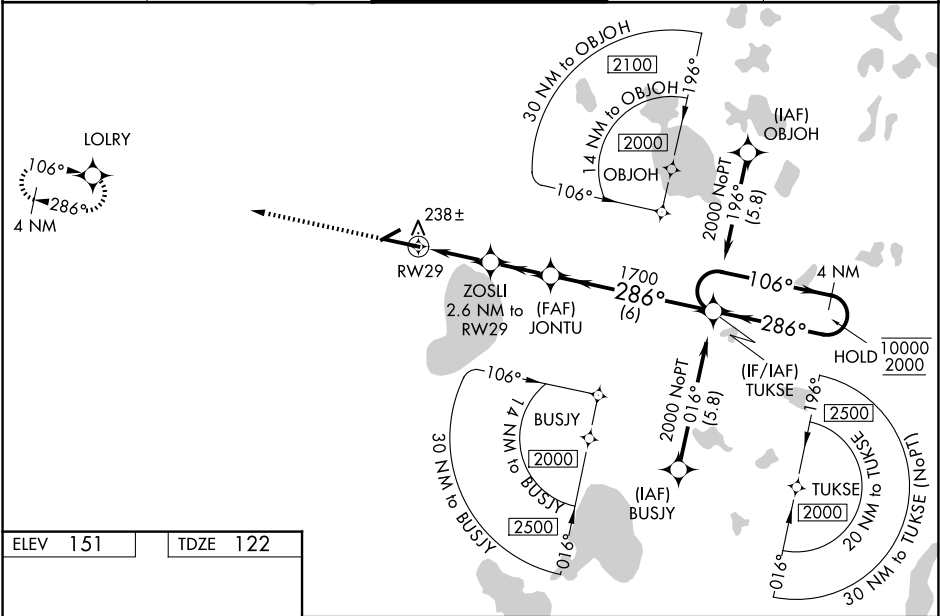
▲

For uncompensated Baro-VNAV systems, LNAV/VNAV NA below -3°C or above 54°C. Baro-VNAV and VDP NA when using OCF altimeter setting. When local altimeter setting not received, use OCF altimeter setting and increase LPV DA to 403 feet; increase LNAV/VNAV DA to 488 feet and all visibilities to RVR 3500. Increase all MDAs 100 feet and LNAV visibility Cat C/D to RVR 5000, and Circling visibility Cat C/D ½ SM. For inop ALS, increase LNAV/VNAV all Cats visibility to RVR 4500 and LNAV Cats C and D visibility to RVR 5500. For inop ALS when using OCF altimeter setting, increase LPV all Cats visibility to RVR 4500, LNAV/VNAV all Cats visibility to RVR 5500, and LNAV visibility Cat C/D to 1½ SM.

MALSR

MISSED APPROACH:
Climb to 2100 direct
LOLRY and hold.

ATIS	JACKSONVILLE APP CON	GAINESVILLE TOWER★	GND CON	UNICOM
127.15	118.175 338.25	119.55 (CTAF) 0 353.7	121.7	122.95



ELEV 151

TDZE 122

2100

LOLRY

JONTU

TUKSE

4 NM Holding Pattern

RWY 29

ZOSLI 2.6 NM to RWY 29

1.1 NM to RWY 29

1.6 NM

2.2 NM

6 NM

GP 3.00° TCH 54

CATEGORY	A	B	C	D
LPV DA		322/24	200 (200-½)	
LNAV/VNAV DA		407/24	285 (300-½)	
LNAV MDA	500/24	378 (400-½)	500/35	378 (400-¾)
CIRCLING	620-1 469 (500-1)	700-1 549 (600-1)	760-1¾ 609 (700-1¾)	820-2 669 (700-2)

REIL Rwy 11

MIRL Rwy 7-25 0

HIRL Rwy 11-29 0