

WAAS CH 86604 W25A	APP CRS 245°	Rwy Ldg 4158 TDZE 144 Apt Elev 151
--	------------------------	---

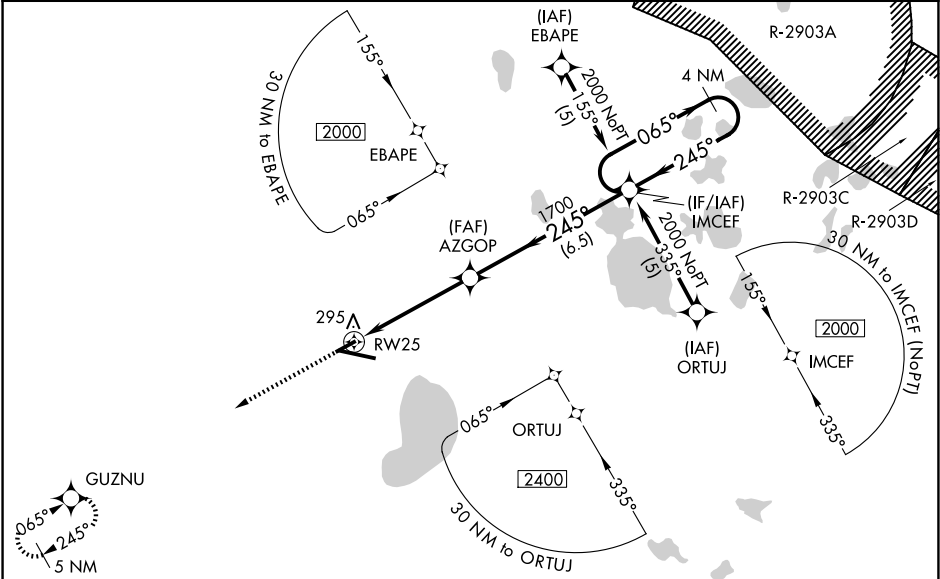
RNAV (GPS) RWY 25
GAINESVILLE RGNL (GNV)

⚠ Baro-VNAV NA when using Ocala Intl-Jim Taylor Fld altimeter setting. For uncompensated Baro-VNAV systems, LNAV/VNAV NA below -15° C (5° F) or above 48° C (118° F).

⚠ DME/DME RNP-0.3 NA. Visibility reduction by helicopters NA. When local altimeter setting not received, use Ocala Intl-Jim Taylor Fld altimeter setting and increase LPV DA to 582 feet and all Cats visibility ¼ SM; increase LNAV/VNAV DA to 775 feet and all Cats visibility ¼ SM; increase all MDAs 100 feet and increase LNAV Cat C and Circling Cat C visibility ¼ SM and LNAV Cat D and Circling Cat D ½ SM. When VGSI inoperative, straight-in/Circling Rwy 25 procedure NA at night.

MISSED APPROACH:
Climb to 2100 direct
GUZNU and hold.

ATIS 127.15	JACKSONVILLE APP CON 118.175 338.25	GAINESVILLE TOWER★ 119.55 (CTAF) 0 353.7	GND CON 121.7	UNICOM 122.95
-----------------------	---	--	-------------------------	-------------------------



ELEV **151** TDZE **144**

245°

REIL Rwy 11
MIRL Rwy 7-25
HIRL Rwy 11-29

2100 GUZNU

AZGOP

RW25

IMCEF

4 NM Holding Pattern

065° → 2000
← 245°

GP 3.00°
TCH 42

CATEGORY	A	B	C	D
LPV DA	501-1¼ 357 (400-1¼)			
LNAV/VNAV DA	694-2 550 (600-2)			
LNAV MDA	560-1 416 (500-1)		560-1¼ 416 (500-1¼)	
CIRCLING	620-1 469 (500-1)	700-1 549 (600-1)	760-1¾ 609 (700-1¾)	820-2 669 (700-2)

SE-3, 07 AUG 2025 to 04 SEP 2025

SE-3, 07 AUG 2025 to 04 SEP 2025