

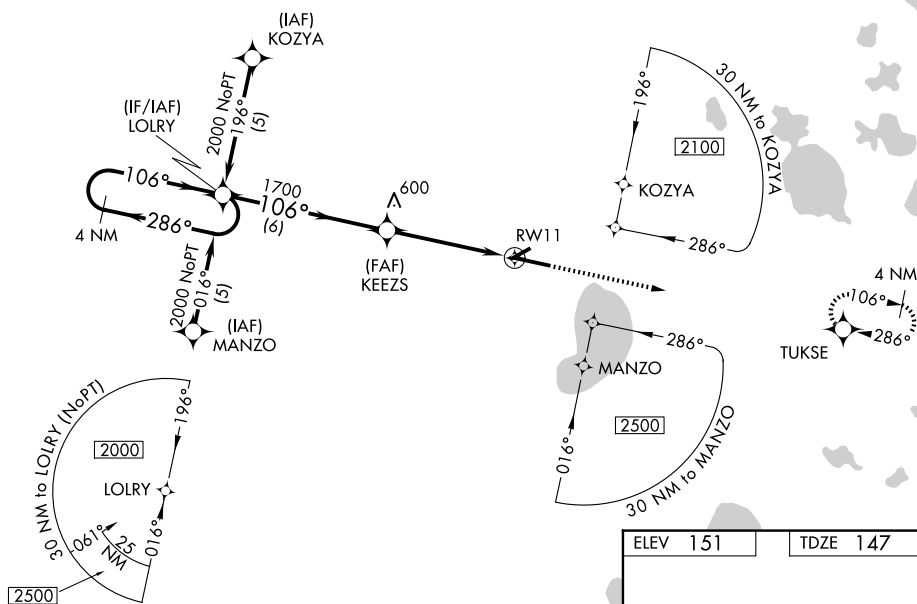
WAAS CH 50115 W11A	APP CRS 106°	Rwy Ldg 7504 TDZE 147 Apt Elev 151
--	------------------------	---

RNAV (GPS) RWY 11
GAINESVILLE RGNL (GNV)

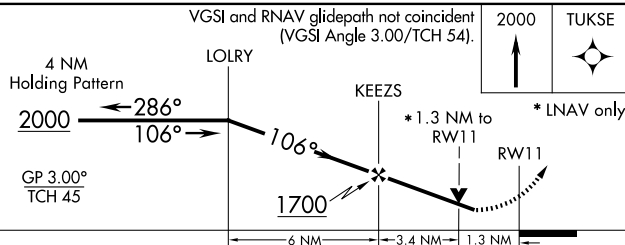
T For uncompensated Baro-VNAV systems, LNAV/VNAV NA below -15° C (5° F) or above 48°C (120°F). DME/DME RNP-0.3 NA. When local altitude setting not received, use Ocala Int'l-Tm Taylor Fld altimeter setting and increase LPV DA to 541 feet and all Cats visibility ½ SM; increase LNAV/VNAV DA to 681 feet and all Cats visibility ½ SM; increase all MDAs 100 feet and increase LNAV Cat C/D and Circling Cat C visibility ¼ SM and Circling Cat D ½ SM. Visibility reduction by helicopters NA. Baro-VNAV NA when using Ocala Int'l-Tm Taylor Fld altimeter setting. When VGSI inoperative, Circling Rwy 25 NA at night. VDP NA when using Ocala Int'l-Tm Taylor Fld altimeter setting.

MISSED APPROACH: Climb to 2000 direct TUKSE and hold.

ATIS 127.15	JACKSONVILLE APP CON 118.175 338.25	GAINESVILLE TOWER★ 119.55 (CTAF) 0 353.7	GND CON 121.7	UNICOM 122.95
-----------------------	---	--	-------------------------	-------------------------



ELEV 151		TDZE 147
----------	--	----------



CATEGORY	A	B	C	D
LPV DA	460-1 313 (400-1)			
RNAV/ VNAV DA	600-1½ 453 (500-1½)			
RNAV MDA	600-1 453 (500-1)		600-1¼ 453 (500-1¼)	600-1½ 453 (500-1½)
CIRCLING	620-1 469 (500-1)	700-1 549 (600-1)	760-1¼ 609 (700-1¼)	820-2 669 (700-2)

