

WAAS CH 86829 W21A	APP CRS 210°	Rwy Ldg TDZE Apt Elev	5204 708 708
--	------------------------	-----------------------------	---

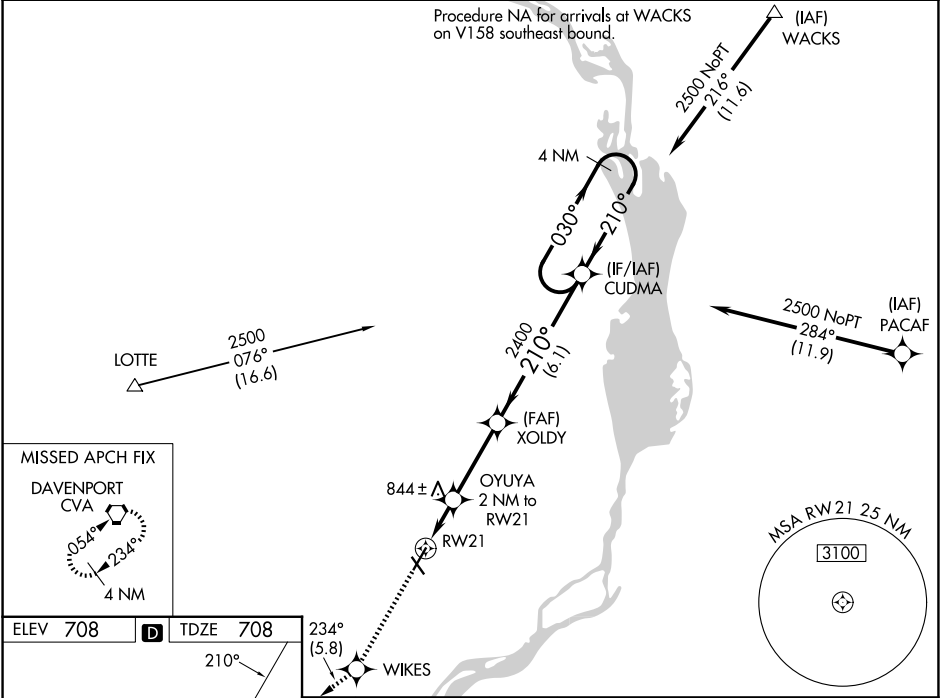
RNAV (GPS) RWY 21

CLINTON MUNI (CWI)

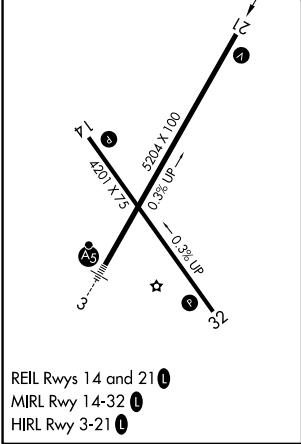
Rwy 21 helicopter visibility reduction below ¾ SM NA. Baro-VNAV NA when using Davenport altimeter setting. For uncompensated Baro-VNAV systems, LNAV/VNAV NA below -16°C (4°F) or above 54°C (130°F). DME/DME RNP-0.3 NA. When local altimeter setting not received, use Davenport altimeter setting: increase all DA 47 feet and all MDA 60 feet. Increase LNAV Cat C visibility ¼ mile.

MISSED APPROACH:
Climb to 3000 direct WIKES and on track 234° to CVA VORTAC and hold.

AWOS-3PT 125.525	QUAD CITY APP CON ★ 125.95 257.8	CLNC DEL 118.5 0	UNICOM 123.075 (CTAF)
----------------------------	--	----------------------------	---------------------------------



ELEV 708	D	TDZE 708
----------	---	----------



3000	WIKES	tr 234°	CVA	VGSI and RNAV glidepath not coincident (VGSI Angle 3.00/TCH 34).
*LNAV only	OYUYA 2 NM to RW21	XOLDY	CUDMA 4 NM Holding Pattern	
RW21	1380*	2400	2500	GP 3.00° TCH 40
2 NM 3.2 NM 6.1 NM				
CATEGORY	A	B	C	D
LPV DA	958-1 250 (300-1)			NA
LNAV/VNAV DA	958-1 250 (300-1)			NA
LNAV MDA	1100-1	392 (400-1)	1100-1 ½ 392 (400-1 ½)	NA
CIRCLING	1140-1 432 (500-1)	1240-1 532 (600-1)	1240-1 ½ 532 (600-1 ½)	NA

NC-3, 07 AUG 2025 to 04 SEP 2025

NC-3, 07 AUG 2025 to 04 SEP 2025