

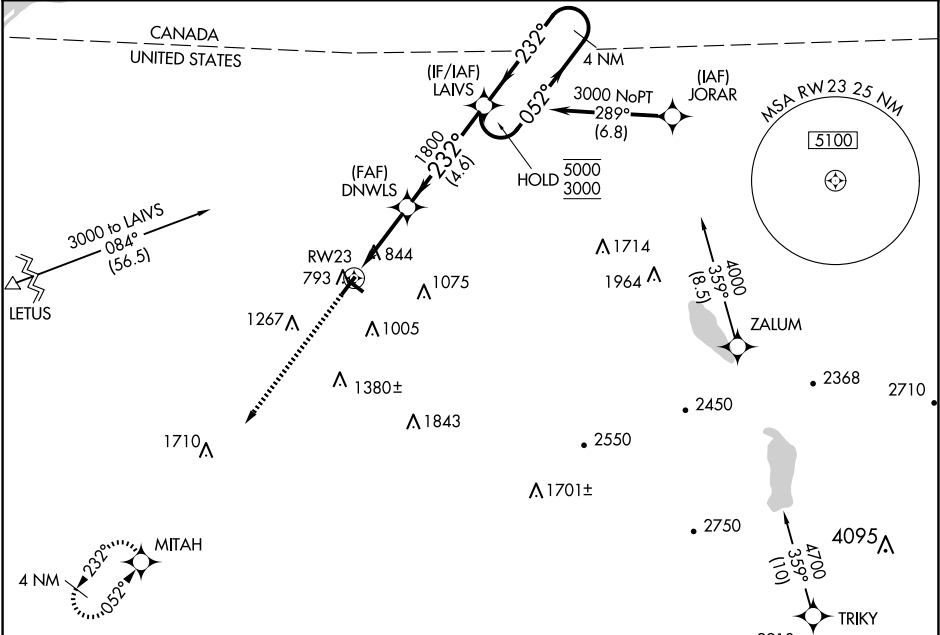
WAAS CH <b>58229</b> <b>W23A</b>	APP CRS <b>232°</b>	Rwy Idg TDZE <b>770</b> Apt Elev <b>790</b>
--	------------------------	---

RNAV (GPS) RWY 23

MALONE-DUFORT (MAL)

RNP APCH - GPS	<p>⚠ Circling Rwy 5 NA at night. Baro-VNAV NA. Use Massena Intl-Richards Fld altimeter setting; when not received, use Adirondack Rgnl altimeter setting and increase LPV DA to 1208 feet; increase LNAV/VNAV DA to 1316 feet; increase all MDAs 60 feet. Increase LPV all Cats visibility <math>\frac{1}{8}</math> SM, LNAV/VNAV all Cats <math>\frac{1}{4}</math> SM, LNAV Cat C <math>\frac{1}{8}</math> SM and Circling Cat C visibility <math>\frac{1}{4}</math> SM.</p>	MISSED APPROACH: Climb to 3600 direct MITAH and hold.
----------------	---	---

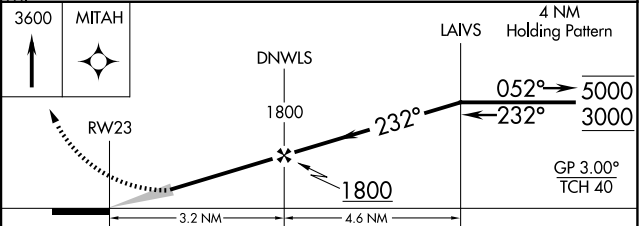
AWOS-AV <b>122.8</b>	MSS ASOS <b>128.075</b>	BOSTON CENTER <b>135.25 377.1</b>	UNICOM <b>122.8 (CTAF) 0</b>
-------------------------	----------------------------	--------------------------------------	---------------------------------



ELEV 790	<b>D</b>	TDZE 770
----------	----------	----------

Inset chart details:

- Path: 3000 x 100, 3250 x 75.
- Altitudes: 3600, 3250, 3000.
- Distances: 0.4 NM, 0.9 NM.
- Angles: 232°.



CATEGORY	A	B	C	D
LPV DA	1155-1 $\frac{1}{8}$	385 (400-1 $\frac{1}{8}$ )		NA
LNAV/VNAV DA	1263-1 $\frac{3}{8}$	493 (500-1 $\frac{3}{8}$ )		NA
LNAV MDA	1240-1	470 (500-1)	1240-1 $\frac{3}{8}$ 470 (500-1 $\frac{3}{8}$ )	NA
<b>C</b> CIRCLING	1460-1 670 (700-1)	1520-1 730 (800-1)	1720-2 $\frac{3}{4}$ 930 (1000-2 $\frac{3}{4}$ )	NA

NE-2, 07 AUG 2025 to 04 SEP 2025

NE-2, 07 AUG 2025 to 04 SEP 2025