

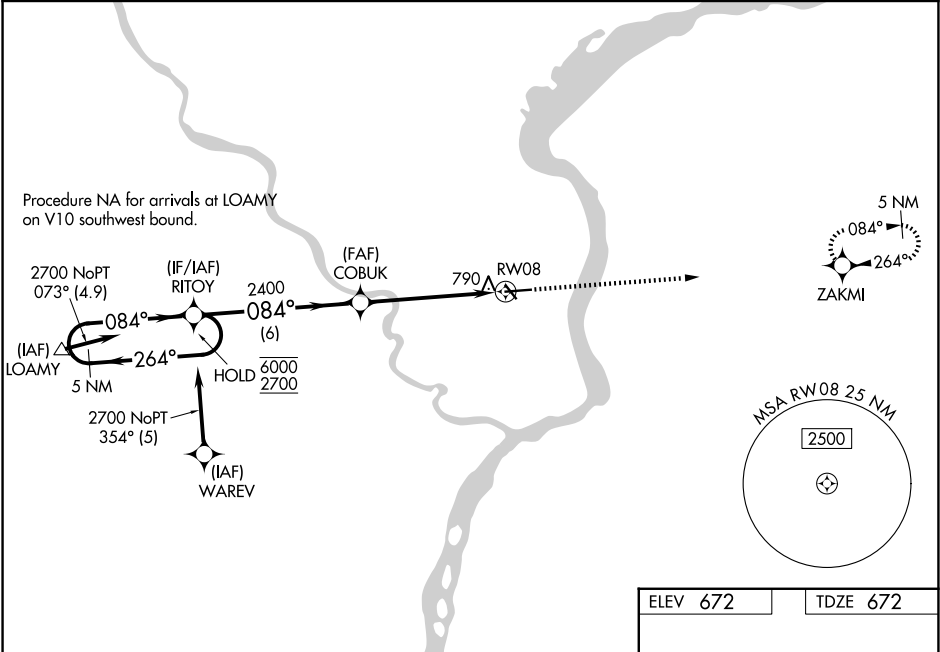
WAAS CH 97304 W08A	APP CRS 084°	Rwy Ldg TDZE 672 Apt Elev 672
--	------------------------	---

RNAV (GPS) RWY 8

KEOKUK MUNI (EOK)

RNP APCH - GPS.	MISSED APPROACH: Climb to 2700 direct ZAKMI and hold.
-----------------	--

AWOS-3 118.375	KANSAS CITY CENTER 126.225 317.775	UNICOM 122.8 (CTAF) 1
--------------------------	--	---------------------------------



5 NM Holding Pattern		RITOY	2700	ZAKMI
6000 2700		COBUK	2400	
GP 3.00° TCH 40		2400	1 NM to RW08	RW08
		6 NM	4.2 NM	1 NM
CATEGORY	A	B	C	D
LPV DA	922-1 250 (300-1)			NA
LNNAV/VNAV DA	1060-1½ 388 (400-1½)			NA
LNNAV MDA	1040-1 368 (400-1)			NA
CIRCLING	1180-1 508 (600-1)	1220-1 548 (600-1)	1220-1½ 548 (600-1½)	NA

