

WAAS CH 45505 W26A	APP CRS 264°	Rwy Ldg 5500 TDZE 671 Apt Elev 672
--	------------------------	---

RNAV (GPS) RWY 26
KEOKUK MUNI (EOK)

RNP APCH - GPS.

⚠ Circling Rwy 32 NA at night. Baro-VNAV and VDP NA when using Burlington altimeter setting. Inop table does not apply to LPV. For uncompensated Baro-VNAV systems, LNAV/VNAV NA below -21°C or above 54°C. When local altimeter setting not received, use Burlington altimeter setting and increase LPV DA to 927 feet, increase LNAV/VNAV DA to 1005 feet, increase all MDAs 60 feet, and Circling visibility Cat C ¼ SM. For inop ALS, increase LNAV/VNAV all Cats visibility to ¾ SM and LNAV all Cats visibility to 1 SM. For inop ALS, when using Burlington altimeter setting, increase LNAV/VNAV all Cats and LNAV Cats A and B visibility to 1 SM.

MALSR



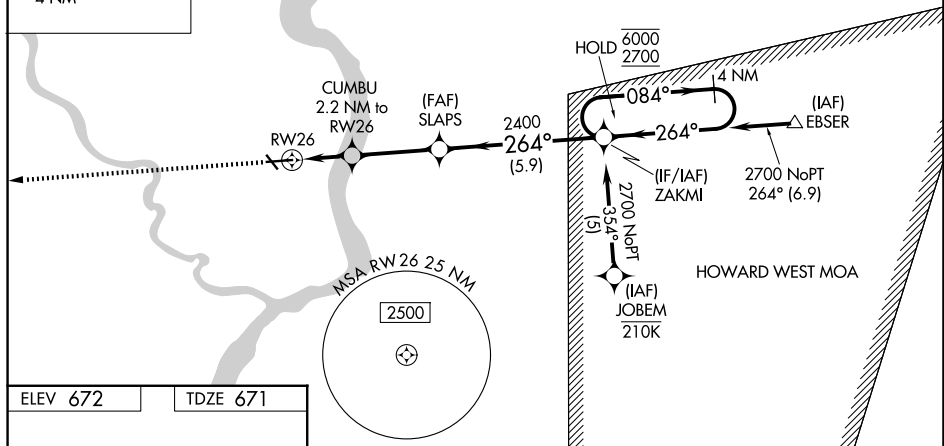
MISSED APPROACH:
Climb to 2700 direct
RITTOY and hold.

AWOS-3
118,375

KANSAS CITY CENTER
126.225 317.775

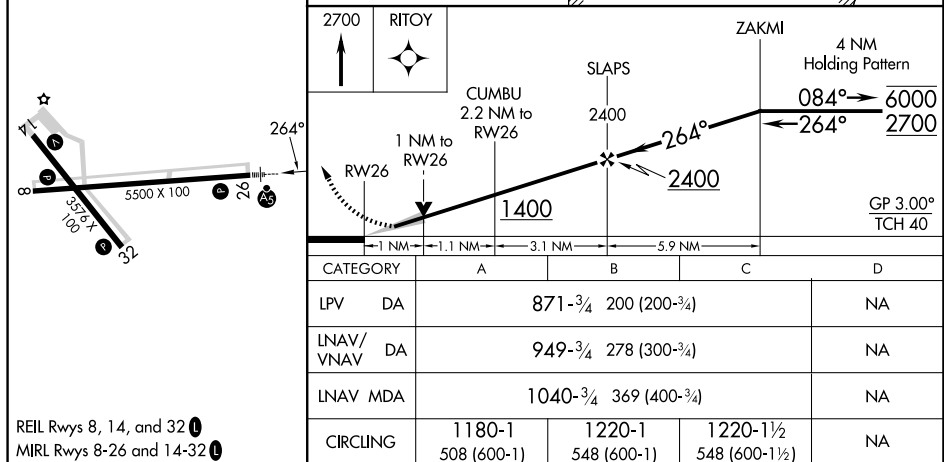
UNICOM
122.8 (CTAF) **L**

MISSED APCH FIX



ELEV 672

TDZE 671



REIL Rwys 8, 14, and 32 **L**
MIRL Rwys 8-26 and 14-32 **L**