

WAAS CH 82736 W30A	APP CRS 296°	Rwy Idg 6000 TDZE 1637 Apt Elev 1648
--	------------------------	---

RNAV (GPS) RWY 30

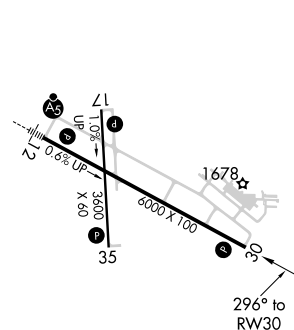
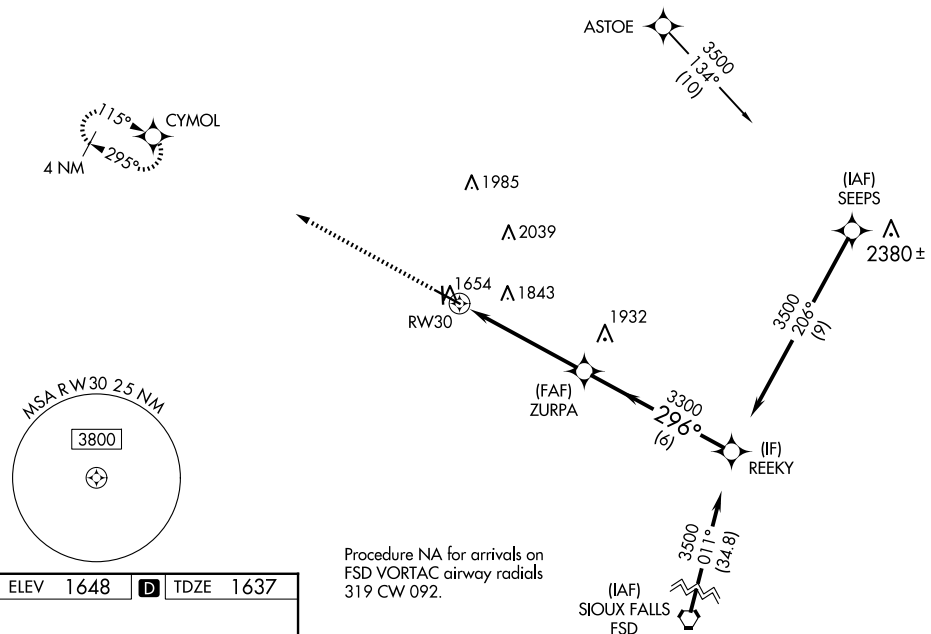
BROOKINGS RGNL (BXX)

RNP APCH.

- T** Circling Rwy 17 NA at night. For uncompensated Baro-VNAV
A systems, LNAV/VNAV NA below -18°C or above 54°C.
Rwy 30 helicopter visibility reduction below 1 SM NA.

MISSED APPROACH: Climb to 3500 direct CYMOL and hold.

AWOS-3PT 119.925	MINNEAPOLIS CENTER 132.05 317.4	GCO 121.725	UNICOM 123.0 (CTAF) 0
----------------------------	---	-----------------------	--



HIRL Rwy 12-30 **L**
MIRL Rwy 17-35 **L**
REIL Rwy 17, 30 and 35 **L**

3500 CYMOL VGS1 and RNAV glidepath not coincident (VGS1 Angle 3.00/TCH 35).

3500 REEKY

* RNAV only

RW30

* 1.3 NM to RW30

ZURPA

3300

296°

3300

3500

GP 3.00° TCH 45

1.3 NM 3.8 NM 6 NM

CATEGORY	A	B	C	D
LPV DA	1887-1 250 (300-1)			
RNAV/ VNAV DA	1968-1 331 (400-1 1/2)			
RNAV MDA	2080-1 443 (500-1)		2080-1 3/8 443 (500-1 3/8)	
CIRCLING	2140-1 492 (500-1)	2160-1 512 (600-1)	2340-2 692 (700-2)	2340-2 1/4 692 (700-2 1/4)