

WAAS CH 73036 W12A	APP CRS 115°	Rwy Idg TDZE Apt Elev	6000 1621 1648
--	------------------------	-----------------------------	---

RNAV (GPS) RWY 12

BROOKINGS RGNL (BKK)

▼

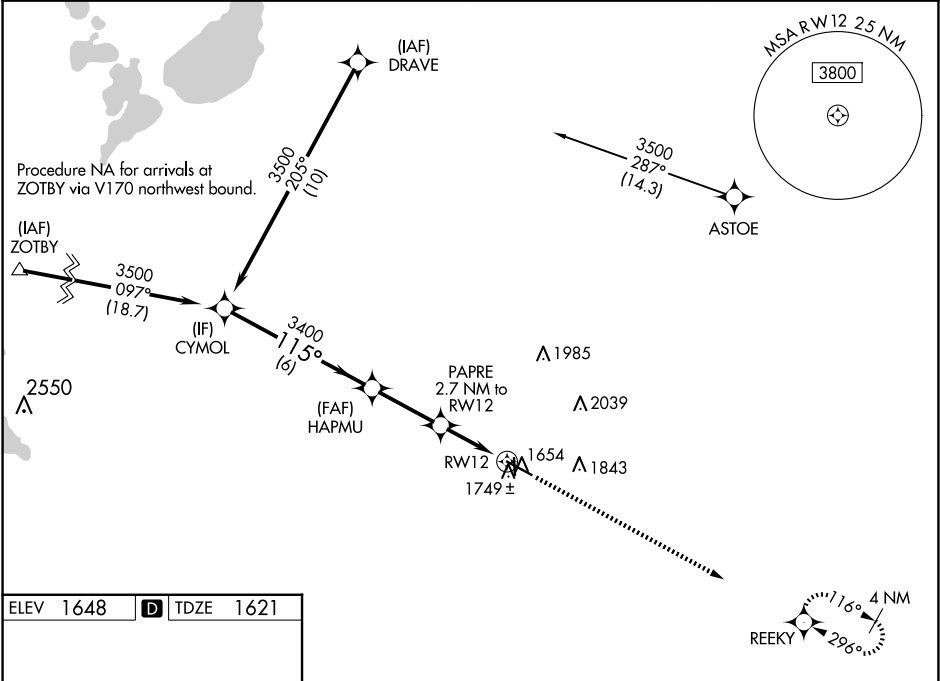
▲

For uncompensated Baro-VNAV systems, LNAV/VNAV NA below -18°C (0°F) or above 54°C (130°F). DME/DME RNP-0.3 NA. When local altimeter setting not received, use Pipestone altimeter setting and increase all DA 81 feet and all MDA 100 feet; increase LNAV/VNAV all Cats visibility ¼ mile; LNAV Cats C and D visibility ⅜ mile; Circling Cats C and D visibility ½ mile. Baro-VNAV and VDP NA when using Pipestone altimeter setting. Night landing Rwy 17 NA.

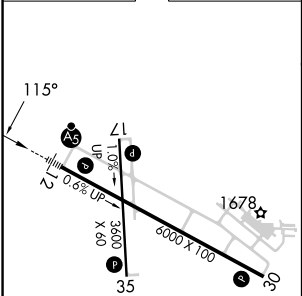
MALSR

MISSED APPROACH: Climb to 3500 direct REEKY and hold.

AWOS-3PT 119.925	MINNEAPOLIS CENTER 132.05 317.4	GCO 121.725	UNICOM 123.0 (CTAF)
----------------------------	---	-----------------------	-------------------------------



ELEV 1648	D	TDZE 1621
-----------	----------	-----------



	CYMOL	HAPMU	PAPRE 2.7 NM to RW12	RW12	
	3500	3400	*2500		
	GP 3.00° TCH 50		*1.1 NM to RW12		
	6 NM	2.8 NM	1.6 NM	1.1 NM	
CATEGORY	A	B	C	D	
LPV DA	1821-½ 200 (200-½)				
LNAV/VNAV DA	1948-⅝ 327 (300-⅝)				
LNAV MDA	2000-½ 379 (400-½)		2000-⅝ 379 (400-⅝)		
CIRCLING	2140-1 492 (500-1)	2160-1 512 (600-1)	2340-2 692 (700-2)	2340-2¼ 692 (700-2¼)	

HIRL Rwy 12-30

MIRL Rwy 17-35

REIL Rws 17, 30 and 35