




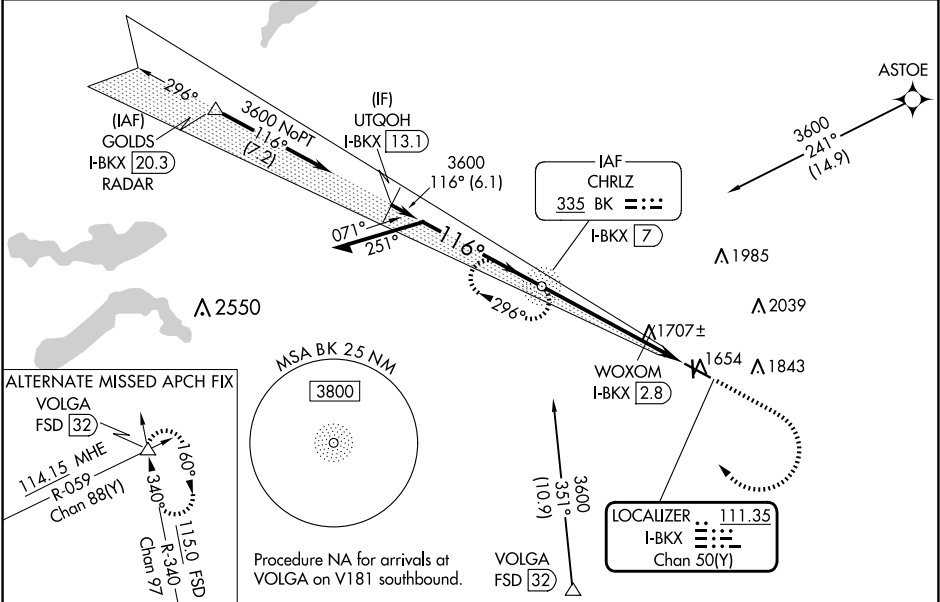
LOC/DME I-BKX 111.35 Chan 50(Y)	APP CRS 116°	Rwy Idg 6000 TDZE 1621 Apt Elev 1648
---	------------------------	---



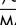
ILS or LOC RWY 12

BROOKINGS RGNL (BKX)

DME required. ADF required. From ASTOE: RNAV 1-GPS required.	MALSR 	MISSED APPROACH: Climb to 2100 then climbing right turn to 3600 direct BK NDB and hold, continue climb-in hold to 3600.
 Circling Rwy 17 NA at night. VDP NA when using Pipestone Muni altimeter setting. For inop ALS, increase S-LOC 12 Cats C/D visibility to 1 3/8 SM. For inop ALS when using WOXOM fix minimums, increase S-LOC 12 Cat C/D visibility to 1 SM.		

AWOS-3PT 119.925	MINNEAPOLIS CENTER 132.05 317.4	GCO 121.725	UNICOM 123.0 (CTAF) 
----------------------------	---	-----------------------	---



BK CHRLZ NDB I-BKX [7]				ELEV 1648	TDZE 1621
Remain within 10 NM					
GS 3.00° TCH 50					
3600 116° 3600 2140 4.3 NM 0.5 NM 1.1 NM					
CATEGORY	A	B	C	D	
S-ILS 12	1821-1/2 200 (200-1/2)				
S-LOC 12	2140-1/2	519 (500-1/2)	2140-1	519 (500-1)	
CIRCLING	2140-1 492 (500-1)	2160-1 512 (600-1)	2340-2 692 (700-2)	2340-2 1/4 692 (700-2 1/4)	
WOXOM FIX MINIMUMS					
S-LOC 12	2000-1/2	379 (400-1/2)	2000-5/8	379 (400-5/8)	
CIRCLING	2140-1 492 (500-1)	2160-1 512 (600-1)	2340-2 692 (700-2)	2340-2 1/4 692 (700-2 1/4)	
HIRL Rwy 12-30 				FAF to MAP 5.9 NM	
MIRL Rwy 17-35 					
REIL Rws 17, 30, and 35 					
				Knots	60 90 120 150 180
				Min:Sec	5:54 3:56 2:57 2:22 1:58