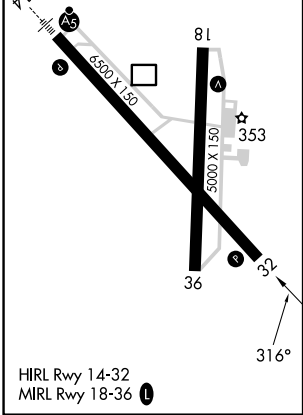
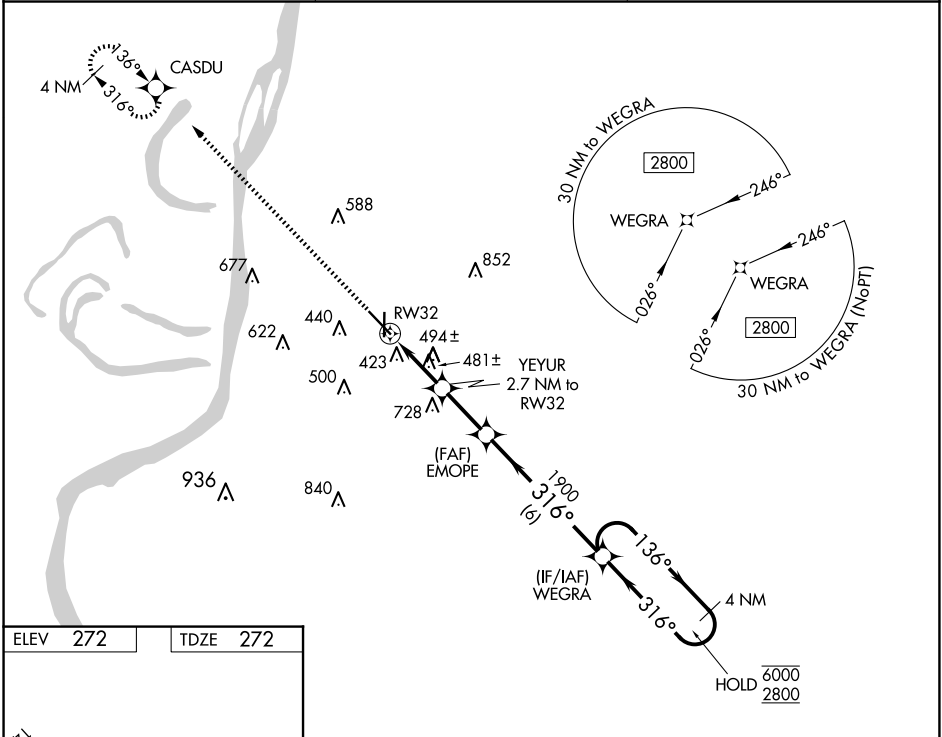


WAAS CH <b>90334</b> <b>W32A</b>	APP CRS <b>316°</b>	Rwy ldg <b>6500</b> TDZE <b>272</b> Apt Elev <b>272</b>
--	------------------------	---

RNAV (GPS) RWY 32

HARDY-ANDERS FLD/NATCHEZ-ADAMS COUNTY (HE/Z)

RNP APCH - GPS.		MISSED APPROACH: Climb to 2800 direct CASDU and hold.
<div><div><div></div><div></div></div><div>Circling Rwy 36 NA at night. Rwy 32 helicopter visibility reduction below ¾ SM NA.</div></div>		
AWOS-3PT 124.675	HOUSTON CENTER 120.975 299.6	UNICOM 122.8 (CTAF) 0



2800 CASDU		Visual Segment - Obstacles.		4 NM Holding Pattern	
↑		YEYUR 2.7 NM to RW32		WEGRA	
1.3 NM to RW32		EMOPE		136° → 6000	
1160		1900		← 316° 2800	
1.3 NM		1.4 NM		2.3 NM	
6 NM					
CATEGORY		A	B	C	D
LP MDA		740-1	468 (500-1)	740-1⅓	468 (500-1⅓)
LNAV MDA		800-1	528 (600-1)	800-1½	528 (600-1½)
CIRCLING		800-1 528 (600-1)	820-1 548 (600-1)	1020-2¼ 748 (800-2¼)	1220-3 948 (1000-3)

SC-4, 07 AUG 2025 to 04 SEP 2025

SC-4, 07 AUG 2025 to 04 SEP 2025