

RNP APCH - GPS.

T

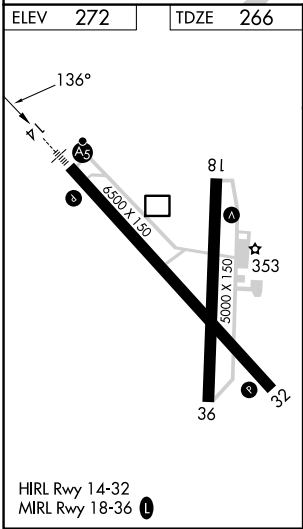
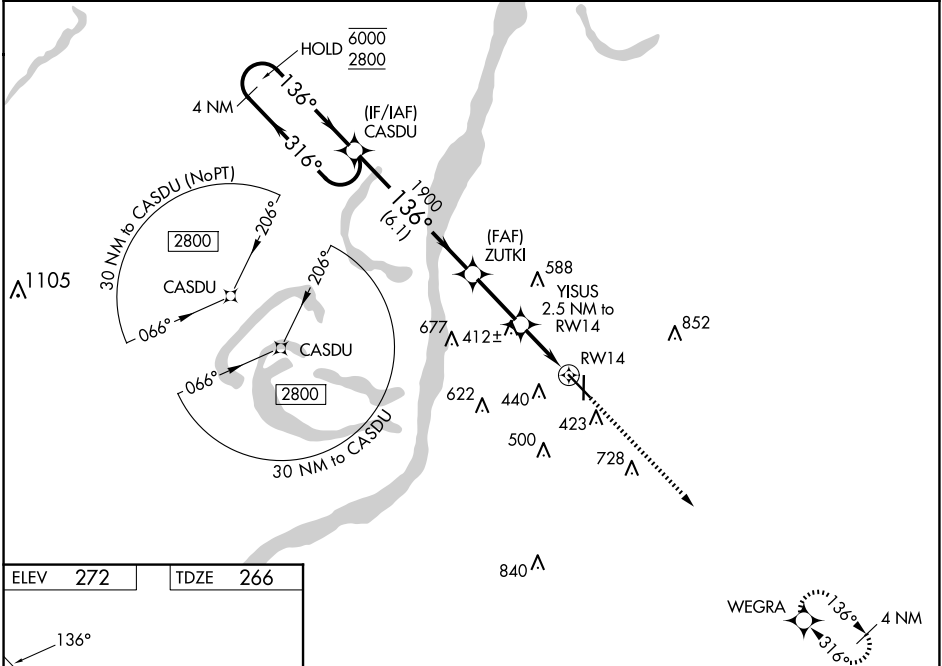
A

Circling Rwy 36 NA at night. Rwy 14 helicopter visibility reduction below ¾ SM NA. For uncompensated Baro-VNAV systems, LNAV/VNAV NA below -15° C or above 54° C. For inop ALS, increase LNAV Cats C and D visibility to 1½ SM. Inop table does not apply to LPV, LNAV/VNAV, and LNAV Cats A and B.

MALSRL

MISSED APPROACH: Climb to 2800 direct WEGRA and hold.

AWOS-3PT 124.675	HOUSTON CENTER 120.975 299.6	UNICOM 122.8 (CTAF)
---------------------	---------------------------------	------------------------



<div>4 NM Holding Pattern</div> <div>6000 ← 316° 2800 → 136°</div> <div>GP 3.00° TCH 54</div>					<div>CASDU</div> <div>ZUTKI</div> <div>YISUS 2.5 NM to RW14</div> <div>1.1 NM to RW14</div> <div>RW14</div>					<div>2800</div> <div>↑</div> <div>WEGRA</div> <div>✦</div>	
					<div>1900</div> <div>1100</div>						
					<div>6.1 NM</div> <div>2.5 NM</div>		<div>1.4 NM</div> <div>1.1 NM</div>				
CATEGORY		A		B		C		D			
LPV DA				575-1		309 (400-1)					
LNAV/ VNAV DA				560-1		294 (300-1)					
LNAV MDA				680-1		414 (500-1)					
<div>CIRCLING</div>		740-1 468 (500-1)		820-1 548 (600-1)		1020-2 ¼ 748 (800-2 ¼)		1220-3 948 (1000-3)			