

LOC I-HEZ
111.35

APP CRS
136°

Rwy Idg
TDZE **266**
Apt Elev **272**

ILS or LOC RWY 14

HARDY-ANDERS FLD/NATCHEZ-ADAMS COUNTY (HEZ)

RNP APCH - GPS required for procedure entry.

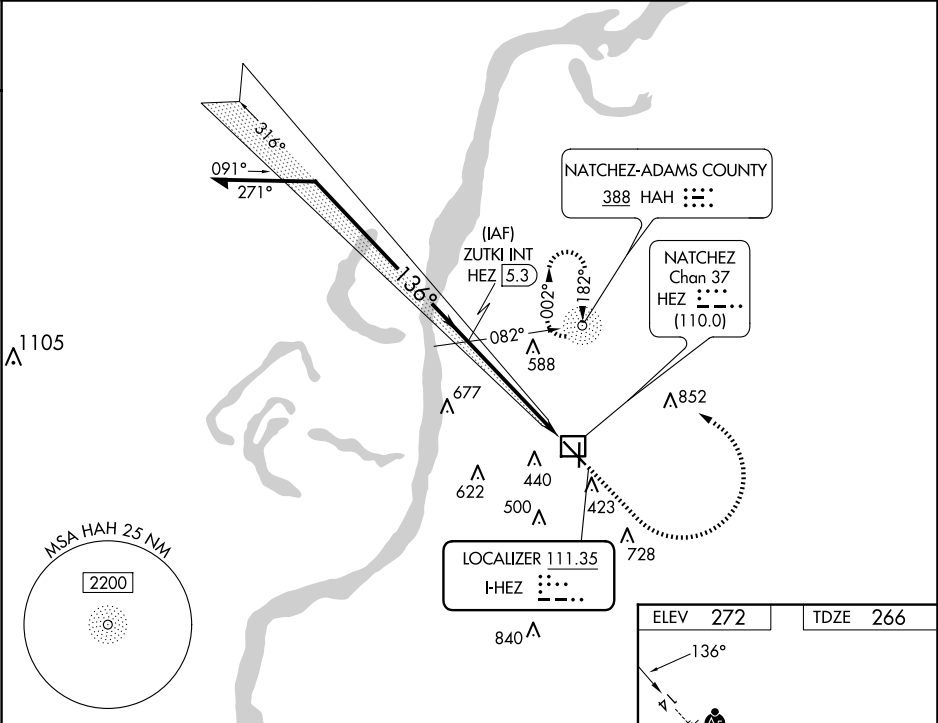
ADF required.

MALSR

MISSED APPROACH:
Climb to 2000 then
left turn direct
HAH NDB and hold.

▼ Circling Rwy 36 NA at night. Rwy 14 helicopter visibility reduction below ¾ SM NA.
▲ Inop table does not apply to S-ILS 14 all Cats and S-LOC 14 Cats A/B.
For inop ALS, increase S-LOC 14 Cat C/B visibility to 1¾ SM.

AWOS-3PT 124.675	HOUSTON CENTER 120.975 299.6	UNICOM 122.8 (CTAF) 0
----------------------------	--	---------------------------------



Remain within 10 NM

ZUTKI INT HEZ [5.3]

2000

HAH

1900

136°

1900

GS 3.00° TCH 54

HEZ [1.7]

HEZ [0.4]

3.6 NM

1.4 NM

ELEV 272

TDZE 266

136°

81

353

36

32

5000 X 150

6500 X 150

HIRL Rwy 14-32

MIRL Rwy 18-36 0

FAF to MAP 5 NM

Knots	60	90	120	150	180
Min:Sec	5:00	3:20	2:30	2:00	1:40

CATEGORY	A	B	C	D
S-ILS 14		575-1	309 (400-1)	
S-LOC 14		740-1	474 (500-1)	
CIRCLING	740-1 468 (500-1)	820-1 548 (600-1)	1020-2¼ 748 (800-2¼)	1220-3 948 (1000-3)