

DYERSBURG, TENNESSEE

AL-966 (FAA)

24025

WAAS
CH 82320
W04A

APP CR
041°

Rwy Idg	5698
TDZE	316
Apt Elev	338

RNAV (GPS) RWY 4
DYERSBURG RGNL (DYR)

RNP APCH.

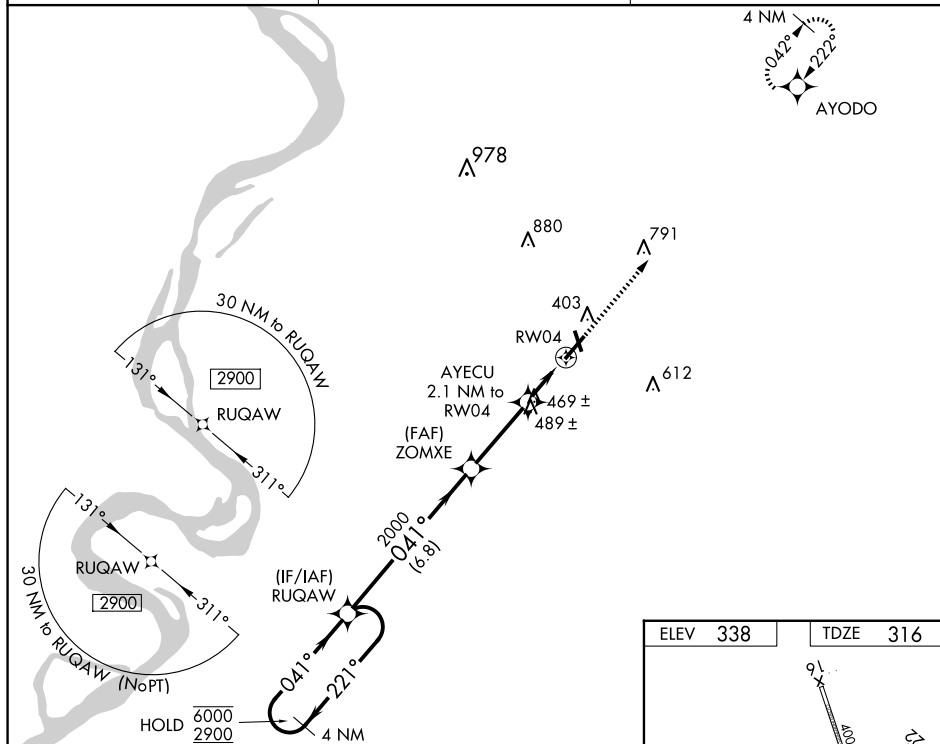
T Circling to Rwy 16, 34 NA at night. Rwy 4 helicopter visibility
A reduction below $\frac{3}{4}$ SM NA. For uncompensated Baro-VNAV
systems, LNAV/VNAV NA below -15°C or above 54°C.

MISSED APPROACH: Climb to 2900 direct AYODO and hold.

AWOS-3PT
135.625

MEMPHIS CENTER
134.65 316.15

UNICOM
123.05 (CTAF) **L**



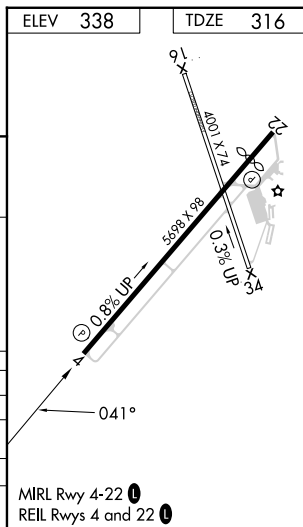
VGS1 and RNAV glidepath not coincident
(VGS1 Angle 3.00/TCH 35).

Holding Pattern: 4 NM, 2900 ft, GP 3.00°, TCH 40°.

Key Points:
 - ZOMXE: 2000 ft
 - AYECU: 2.1 NM to RW04
 - Point: 1.2 NM to RW04
 - Distance from start of descent: 6.8 NM, 3.1 NM, 0.9 NM, 1.2 NM

*LNNAV only.

CATEGORY	A	B	C	D
LPV DA		588-1	272 (300-1)	
LNNAV/VNAV DA		801-1 $\frac{3}{8}$	485 (500-1 $\frac{3}{8}$)	
LNNAV MDA	720-1	404 (400-1)	720-1 $\frac{1}{8}$	404 (400-1 $\frac{1}{8}$)
CIRCLING	740-1 402 (500-1)	800-1 462 (500-1)	1040-2 702 (800-2)	1240-3 902 (1000-3)



DYERSBURG, TENNESSEE

Amdt 2D 20MAY21

36°00'N-89°24'W

DYERSBURG RGNL (DYR)
RNAV (GPS) RWY 4

SE-1, 07 AUG 2025 to 04 SEP 2025