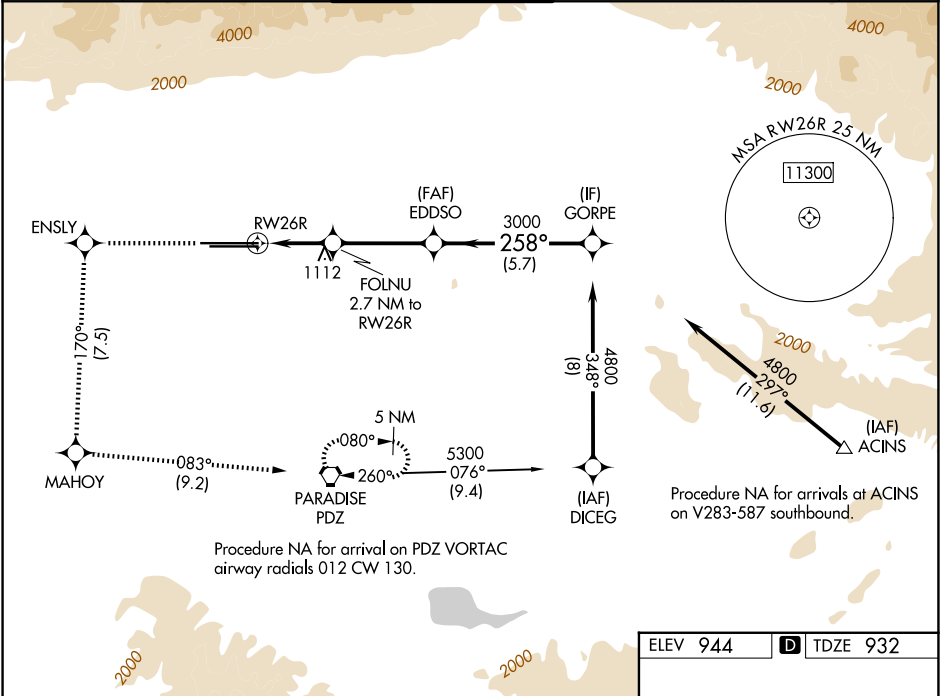






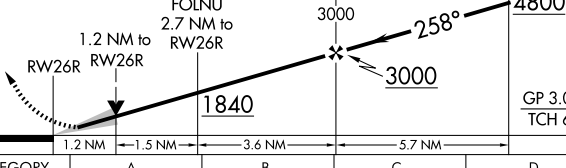
WAAS CH <b>53406</b> <b>W26A</b>	APP CRS <b>258°</b>	Rwy Ldg <b>12197</b> TDZE <b>932</b> Apt Elev <b>944</b>
--	------------------------	--

RNAV (GPS) Y RWY 26R

ONTARIO INTL (ONT)

RNP APCH - GPS.		ALSF-2	MISSED APPROACH: Climb to 4700 direct ENSLY and on track 170° to MAHOY and on track 083° to PDZ VORTAC and hold, continue climb-in-hold to 4700.		
▼ Circling NA north of Rwy 8L-26R. For uncompensated Baro-VNAV systems, procedure NA below 2°C or above 54°C .					
D-ATIS <b>124.25</b>	SOCAL APP CON <b>127.0 318.2</b>	ONTARIO TOWER <b>120.6 360.775</b>	GND CON <b>121.9 257.8</b>	CLNC DEL <b>132.9</b>	CPDLC



4700	ENSLY	tr 170°	MAHOY	tr 083°	PDZ	VGSI and RNAV glidepath not coincident (VGSI Angle 3.00/TCH 75).	
						EDDSO	GORPE
							
CATEGORY		A		B		C	D
LPV	DA	1132/18 200 (200-½)					
LNAV/VNAV	DA	1267/55 335 (400-1)					
LNAV	MDA	1380/24	448 (500-½)	1380/45		448 (500-¾)	
CIRCLING		1400-1	456 (500-1)	1500-1½		1540-2	
				556 (600-1½)		596 (600-2)	

