
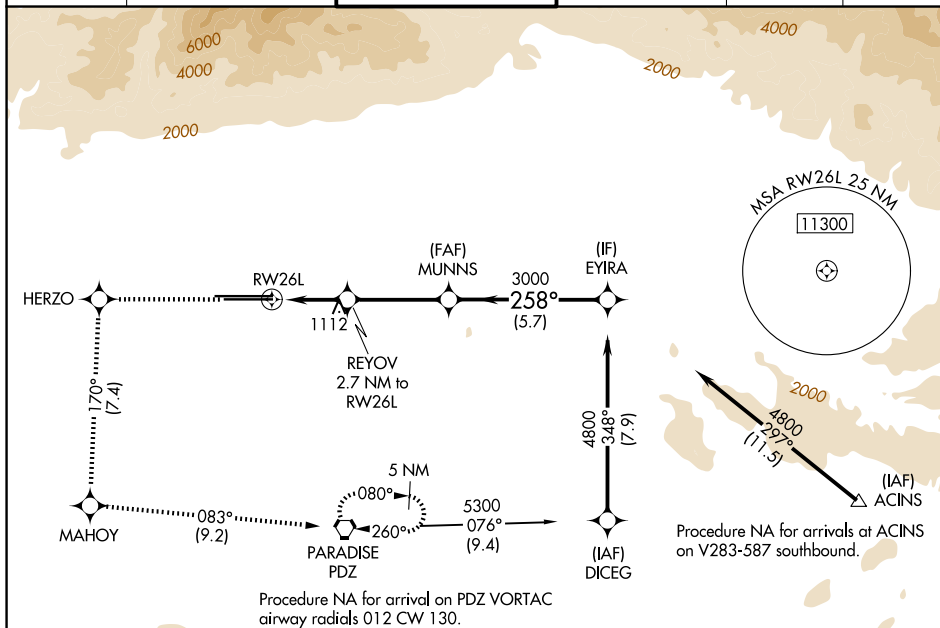


WAAS CH <b>90407</b> <b>W26B</b>	APP CRS <b>258°</b>	Rwy Ldg <b>10200</b> TDZE <b>926</b> Apt Elev <b>944</b>
--	------------------------	--

RNAV (GPS) Y RWY 26L  
ONTARIO INTL (ONT)

RNP APCH - GPS.			ALSF-2 	MISSED APPROACH: Climb to 4700 direct HERZO and on track 170° to MAHOY and on track 083° to PDZ VORTAC, continue climb in hold to 4700.		
<b>T</b> Circling NA north of Rwy 8L-26R. For uncompensated Baro-VNAV systems, procedure NA below 2°C or above 54°C. For inop ALS, increase all Cats LNAV/VNAV visibility to RVR 5500.						
D-ATIS <b>124.25</b>	SOCAL APP CON <b>127.0 318.2</b>	ONTARIO TOWER <b>120.6 360.775</b>	GND CON <b>121.9 257.8</b>	CLNC DEL <b>132.9</b>	CPDLC	



ELEV 944	<b>D</b>	TDZE 926
----------	----------	----------

