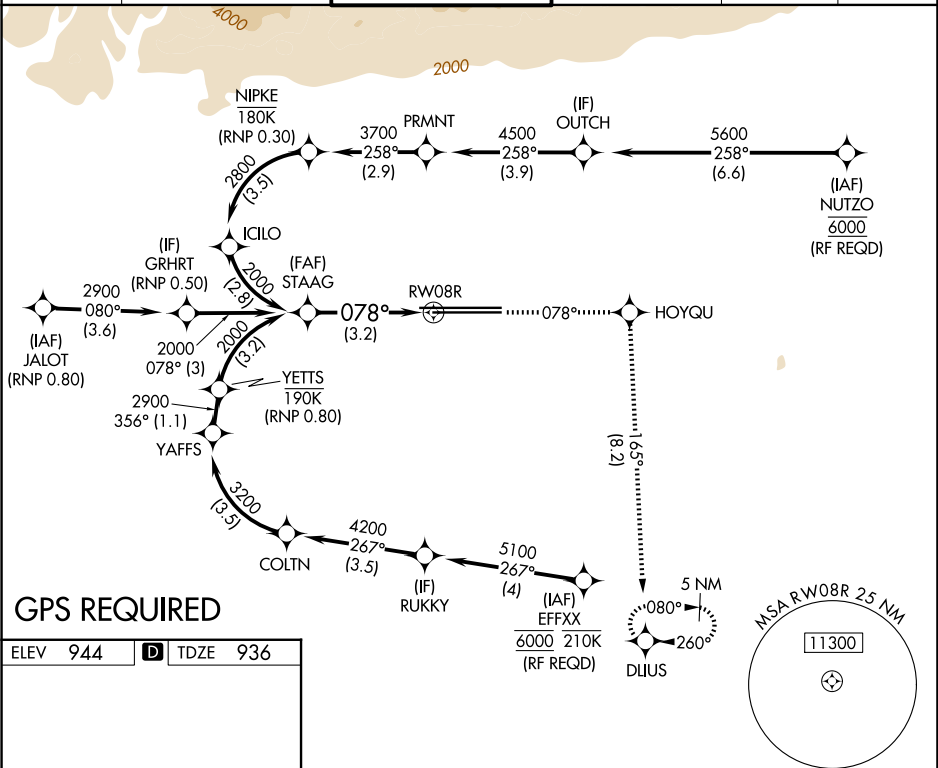


RNAV (RNP) Z RWY 8R
ONTARIO INTL (ONT)

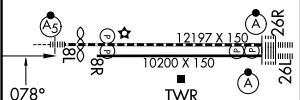
MISSED APPROACH: Climb to 5300 on track 078° to HOYQU and on track 165° to DLIUS and hold, continue climb-in-hold to 5300.

D-ATIS 124.25	SOCAL APP CON 127.0 318.2	ONTARIO TOWER 120.6 360.775	GND CON 121.9 257.8	CLNC DEL 132.9	CPDLC
-------------------------	-------------------------------------	---------------------------------------	-------------------------------	--------------------------	-------



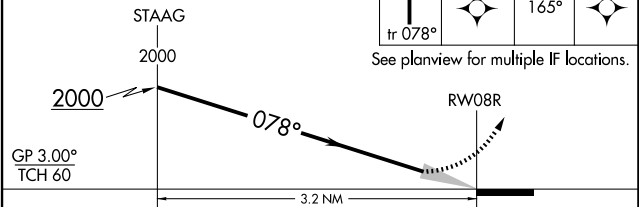
GPS REQUIRED

ELEV 944	D	TDZE 936
----------	----------	----------



TDZ/CL Rwy 8L, 26R and 26L
HIRL Rwy 8L-26R and 8R-26L

VGSI and RNAV glidepath not coincident
(VGSI Angle 3.00/TCH 65).



CATEGORY	A	B	C	D
RNP 0.30 DA	1342-1 $\frac{3}{8}$ 406 (400-1 $\frac{3}{8}$)			

AUTHORIZATION REQUIRED