

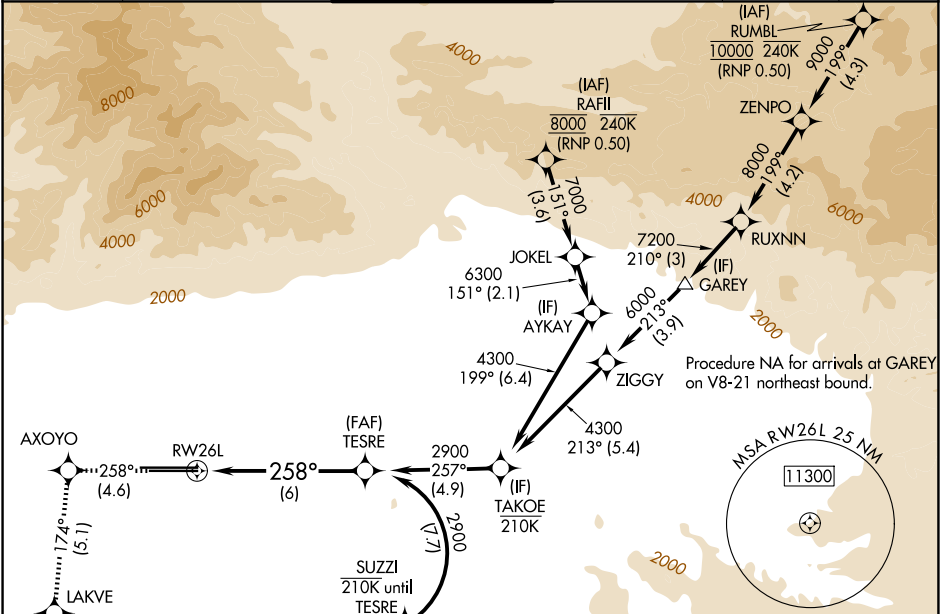
APP CRS	Rwy Ldg	10200
258°	TDZE	926
	Apt Elev	944

RNAV (RNP) Z RWY 26L

ONTARIO INTL (ONT)

RNP AR APCH - GPS.	ALSF-2	MISSED APPROACH: Climb to 3400 on track 258° to AXOYO and track 174° to LAKVE and track 122° to MRIAM and track 079° to ADRYN and hold.
For uncompensated Baro-VNAV systems, procedure NA below 1°C or above 54°C. For inop ALS, increase RNP 0.10 visibility all Cats to RVR 4500, RNP 0.17 visibility all Cats to RVR 5000, RNP 0.30 visibility all Cats to RVR 6000.		

D-ATIS	SOCAL APP CON	ONTARIO TOWER	GND CON	CLNC DEL	CPDLC
124.25	127.0 318.2	120.6 360.775	121.9 257.8	132.9	



3400

↑

tr 258°

AXOYO

✧

tr 174°

LAKVE

✧

tr 122°

MRIAM

✧

tr 079°

ADRYN

✧

TESRE

✧

2900

VGSI and RNAV glidepath not coincident (VGSI Angle 3.00/TCH 74).

RW26L

258°

2900

GP 3.00° TCH 58

See planview for multiple IF locations.

6 NM

CATEGORY

A

B

C

D

RNP 0.10 DA

1203/24

277 (300-½)

RNP 0.17 DA

1245/24

319 (400-½)

RNP 0.30 DA

1322/35

396 (400-¾)

AUTHORIZATION REQUIRED

ELEV 944

TDZE 926

TDZ/CL Rwy's 8L, 26R and 26L

HIRL Rwy's 8L-26R and 8R-26L